

Power Distribution Units (PDUs) 8400–8600 SERIES

PowerLok® offers greater reliability, advanced functionality and an overall higher standard of rack PDUs for mission critical facilities. From unmatched convenience and delivery options at the ordering stage to the many unique customizations and modern design of the product itself, PowerLok® is the most feature-rich PDU on the market, at market competitive prices.

Power

- 30A 208/240V DELTA 3PH
- 35A 208/240V DELTA 3PH
- 50A 208/240V DELTA 3PH
- 60A 208/240V DELTA 3PH
- Up to 17 kWs

Capability

- Slim 2.18" x 2.0" low profile
- Cord locking using your cords
- Maintain greatest receptacle count

Reliability

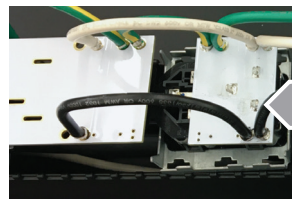
- Made in the USA in an AS9100 facility
- 100% robotically soldered connections



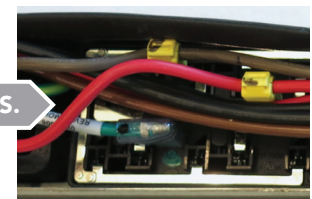
At all power levels, reliability matters

100% robotically soldered connections from line cord to every receptacle provides 3X greater reliability. The second photo represents most other PDUs: manually created connections which generate heat and are 3X more likely to fail.

**Independently analyzed to be 3X less likely to fail.
Steve Fairfax, mtechnologies, inc.*



PowerLok® Secure*
Robotically crimped
and soldered.



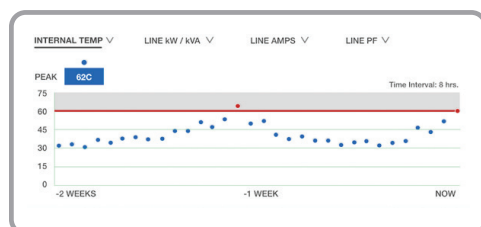
Quick to overheat and fail
Hand-work mechanical
terminations.

5 kAIC Model: 2.7" deep

10 kAIC Model: 2.0" deep

Improved access to equipment in power-dense racks

More room to access your racked equipment with an industry leading power density and angled whip input. Measures only 2.18" wide x 2.0" deep for PDUs up to 60A 3PH. Models with CordLok are 2.9" deep.



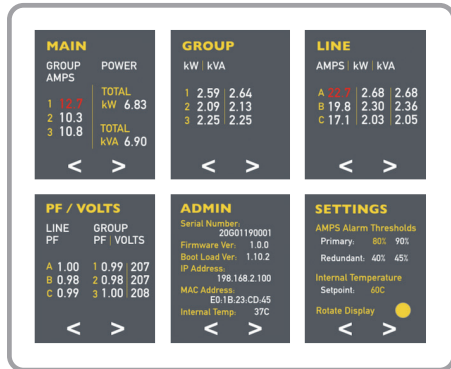
Know your PDU internal temperatures in high-heat racks

PDU internal and rack temperatures and humidity monitoring communicates via SNMP, or browse to the PDU web server where alarm set-points can be updated for your requirements.

Secure your power cords

CordLok® works with your server cords, does not require you to sacrifice high receptacle density, and allows single hand insertion and removal of cords. CordLok clicks when fully inserted.

Every Select Model PDU comes standard with CordLok®. PDUs without CordLok® can be built upon request.



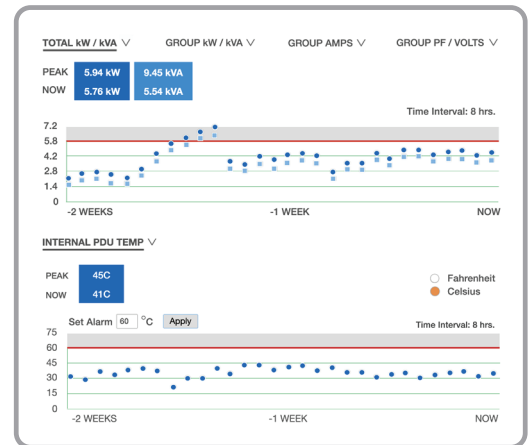
Increase monitoring accuracy with precision

PowerLok® has a more advanced and reliable total monitoring solution not found on other rack PDUs. A fully functional and highly visible touchscreen display eliminates failure prone push-buttons. PowerLok® PDUs can be daisy chained to reduce network port use. Alarms on the main unit display and in the web based software appear in red when alarms are present.

PowerLok® is programmed at the factory to be network silent in your facility—allowing your management software to collect PowerLok's precision power data when you need it.

Visualize power with historical graphing

- Monitoring Accuracy**
 Voltage +/- 0.5% at nominal
 Current within 0.5% from 1A to 30A. +/- 1% from 500mA to 30A.
- Aggregate (kWh, W, VA) plus Phase**
 ABC Line Currents, plus Group 1, 2, 3 Monitoring (kWh, W, VA, PF, V, A).
- Network Applications**
 HTTP, SNMP-V1/V2c Network Management, SMTP Email. DHCP for dynamic IP address request from a server, DNS to resolve host names for email, NTP, and SNMP servers.
- Network Interface and Transport/Internet**
 Ethernet RJ-45 and TCP/IP v4, v6, RSTP Ethernet daisy chain capability.



	Select a PDU (640 models)	Build a PDU Additional Options
Monitoring	Basic or Remote and Unit Display	Remote and No Unit Display
Unit Lengths	36", 41", 72", 82"	24", 46", 92"
Plug Types	NEMA L15-30P, CS8365C, IEC 309 (IP44)	IEC 309 (IP67)
Whip Lengths	6' and 10'	Up to 15'
CordLok®	Yes	No

208/240V PDUs when you need them*

640 Select Models available with fast response. Some Select Models are available to ship in 1–2 days.

*Build Models in this power type have a minimum order quantity of 48 units

Specifications, 8400 Series

Receptacle	Carbon 6' Whip	Carbon 10' Whip	Red 6' Whip	Red 10' Whip	White 6' Whip	White 10' Whip	Blue 6' Whip	Blue 10' Whip
------------	-------------------	--------------------	----------------	-----------------	------------------	-------------------	-----------------	------------------

82" 30A–35A
MONITORED, 82", 30A 208/240V 3PH (10.0 kW), NEMA L15-30P, CORDLOK

54-C13	UP8406M-06C	UP8406M-10C	UP8406M-06R	UP8406M-10R	UP8406M-06W	UP8406M-10W	UP8406M-06B	UP8406M-10B
42-C13 and 6-C19	UP8408M-06C	UP8408M-10C	UP8408M-06R	UP8408M-10R	UP8408M-06W	UP8408M-10W	UP8408M-06B	UP8408M-10B

BASIC, 82", 30A 208/240V 3PH (10.0 kW), NEMA L15-30P, CORDLOK

54-C13	UP8406B-06C	UP8406B-10C	UP8406B-06R	UP8406B-10R	UP8406B-06W	UP8406B-10W	UP8406B-06B	UP8406B-10B
42-C13 and 6-C19	UP8408B-06C	UP8408B-10C	UP8408B-06R	UP8408B-10R	UP8408B-06W	UP8408B-10W	UP8408B-06B	UP8408B-10B

MONITORED, 82", 35A 208/240V 3PH (11.2 kW), CS8365C, CORDLOK

54-C13	UP8436M-06C	UP8436M-10C	UP8436M-06R	UP8436M-10R	UP8436M-06W	UP8436M-10W	UP8436M-06B	UP8436M-10B
42-C13 and 6-C19	UP8438M-06C	UP8438M-10C	UP8438M-06R	UP8438M-10R	UP8438M-06W	UP8438M-10W	UP8438M-06B	UP8438M-10B

BASIC, 82", 35A 208/240V 3PH (11.2 kW), CS8365C, CORDLOK

54-C13	UP8436B-06C	UP8436B-10C	UP8436B-06R	UP8436B-10R	UP8436B-06W	UP8436B-10W	UP8436B-06B	UP8436B-10B
42-C13 and 6-C19	UP8438B-06C	UP8438B-10C	UP8438B-06R	UP8438B-10R	UP8438B-06W	UP8438B-10W	UP8438B-06B	UP8438B-10B

72" 30A–35A
MONITORED, 72", 30A 208/240V 3PH (10.0 kW), NEMA L15-30P, CORDLOK

48-C13	UP8401M-06C	UP8401M-10C	UP8401M-06R	UP8401M-10R	UP8401M-06W	UP8401M-10W	UP8401M-06B	UP8401M-10B
36-C13 and 6-C19	UP8403M-06C	UP8403M-10C	UP8403M-06R	UP8403M-10R	UP8403M-06W	UP8403M-10W	UP8403M-06B	UP8403M-10B

BASIC, 72", 30A 208/240V 3PH (10.0 kW), NEMA L15-30P, CORDLOK

48-C13	UP8401B-06C	UP8401B-10C	UP8401B-06R	UP8401B-10R	UP8401B-06W	UP8401B-10W	UP8401B-06B	UP8401B-10B
36-C13 and 6-C19	UP8403B-06C	UP8403B-10C	UP8403B-06R	UP8403B-10R	UP8403B-06W	UP8403B-10W	UP8403B-06B	UP8403B-10B

MONITORED, 72", 35A 208/240V 3PH (11.2 kW), CS8365C, CORDLOK

48-C13	UP8431M-06C	UP8431M-10C	UP8431M-06R	UP8431M-10R	UP8431M-06W	UP8431M-10W	UP8431M-06B	UP8431M-10B
36-C13 and 6-C19	UP8433M-06C	UP8433M-10C	UP8433M-06R	UP8433M-10R	UP8433M-06W	UP8433M-10W	UP8433M-06B	UP8433M-10B

BASIC, 72", 35A 208/240V 3PH (11.2 kW), CS8365C, CORDLOK

48-C13	UP8431B-06C	UP8431B-10C	UP8431B-06R	UP8431B-10R	UP8431B-06W	UP8431B-10W	UP8431B-06B	UP8431B-10B
36-C13 and 6-C19	UP8433B-06C	UP8433B-10C	UP8433B-06R	UP8433B-10R	UP8433B-06W	UP8433B-10W	UP8433B-06B	UP8433B-10B

Specifications, 8400 Series

Receptacle	Carbon 6' Whip	Carbon 10' Whip	Red 6' Whip	Red 10' Whip	White 6' Whip	White 10' Whip	Blue 6' Whip	Blue 10' Whip
------------	-------------------	--------------------	----------------	-----------------	------------------	-------------------	-----------------	------------------

41" 30A–35A
MONITORED, 41", 30A 208/240V 3PH (10.0 kW), NEMA L15-30P, CORDLOK

21-C13	UP8416M-06C	UP8416M-10C	UP8416M-06R	UP8416M-10R	UP8416M-06W	UP8416M-10W	UP8416M-06B	UP8416M-10B
15-C13 and 3-C19	UP8417M-06C	UP8417M-10C	UP8417M-06R	UP8417M-10R	UP8417M-06W	UP8417M-10W	UP8417M-06B	UP8417M-10B

BASIC, 41", 30A 208/240V 3PH (10.0 kW), NEMA L15-30P, CORDLOK

27-C13	UP8416B-06C	UP8416B-10C	UP8416B-06R	UP8416B-10R	UP8416B-06W	UP8416B-10W	UP8416B-06B	UP8416B-10B
21-C13 and 3-C19	UP8417B-06C	UP8417B-10C	UP8417B-06R	UP8417B-10R	UP8417B-06W	UP8417B-10W	UP8417B-06B	UP8417B-10B

MONITORED, 41", 35A 208/240V 3PH (11.2 kW), CS8365C, CORDLOK

21-C13	UP8446M-06C	UP8446M-10C	UP8446M-06R	UP8446M-10R	UP8446M-06W	UP8446M-10W	UP8446M-06B	UP8446M-10B
15-C13 and 3-C19	UP8447M-06C	UP8447M-10C	UP8447M-06R	UP8447M-10R	UP8447M-06W	UP8447M-10W	UP8447M-06B	UP8447M-10B

BASIC, 41", 35A 208/240V 3PH (11.2 kW), CS8365C, CORDLOK

27-C13	UP8446B-06C	UP8446B-10C	UP8446B-06R	UP8446B-10R	UP8446B-06W	UP8446B-10W	UP8446B-06B	UP8446B-10B
21-C13 and 3-C19	UP8447B-06C	UP8447B-10C	UP8447B-06R	UP8447B-10R	UP8447B-06W	UP8447B-10W	UP8447B-06B	UP8447B-10B

36" 30A–35A
MONITORED, 36", 30A 208/240V 3PH (10.0 kW), NEMA L15-30P, CORDLOK

15-C13	UP8421M-06C	UP8421M-10C	UP8421M-06R	UP8421M-10R	UP8421M-06W	UP8421M-10W	UP8421M-06B	UP8421M-10B
6-C13 and 6-C19	UP8423M-06C	UP8423M-10C	UP8423M-06R	UP8423M-10R	UP8423M-06W	UP8423M-10W	UP8423M-06B	UP8423M-10B

BASIC, 36", 30A 208/240V 3PH (10.0 kW), NEMA L15-30P, CORDLOK

21-C13	UP8421B-06C	UP8421B-10C	UP8421B-06R	UP8421B-10R	UP8421B-06W	UP8421B-10W	UP8421B-06B	UP8421B-10B
12-C13 and 6-C19	UP8423B-06C	UP8423B-10C	UP8423B-06R	UP8423B-10R	UP8423B-06W	UP8423B-10W	UP8423B-06B	UP8423B-10B

MONITORED, 36", 35A 208/240V 3PH (11.2 kW), CS8365C, CORDLOK

15-C13	UP8451M-06C	UP8451M-10C	UP8451M-06R	UP8451M-10R	UP8451M-06W	UP8451M-10W	UP8451M-06B	UP8451M-10B
6-C13 and 6-C19	UP8453M-06C	UP8453M-10C	UP8453M-06R	UP8453M-10R	UP8453M-06W	UP8453M-10W	UP8453M-06B	UP8453M-10B

BASIC, 36", 35A 208/240V 3PH (11.2 kW), CS8365C, CORDLOK

21-C13	UP8451B-06C	UP8451B-10C	UP8451B-06R	UP8451B-10R	UP8451B-06W	UP8451B-10W	UP8451B-06B	UP8451B-10B
12-C13 and 6-C19	UP8453B-06C	UP8453B-10C	UP8453B-06R	UP8453B-10R	UP8453B-06W	UP8453B-10W	UP8453B-06B	UP8453B-10B

Specifications, 8500 Series

Receptacle	Carbon 6' Whip	Carbon 10' Whip	Red 6' Whip	Red 10' Whip	White 6' Whip	White 10' Whip	Blue 6' Whip	Blue 10' Whip
------------	-------------------	--------------------	----------------	-----------------	------------------	-------------------	-----------------	------------------

72" 50A
MONITORED, 72", 50A 208/240V 3PH (14.4 kW), CS8365C, CORDLOK

36-C13	UP8501M-06C	UP8501M-10C	UP8501M-06R	UP8501M-10R	UP8501M-06W	UP8501M-10W	UP8501M-06B	UP8501M-10B
24-C13 and 6-C19	UP8502M-06C	UP8502M-10C	UP8502M-06R	UP8502M-10R	UP8502M-06W	UP8502M-10W	UP8502M-06B	UP8502M-10B
42-C13	UP8506M-06C	UP8506M-10C	UP8506M-06R	UP8506M-10R	UP8506M-06W	UP8506M-10W	UP8506M-06B	UP8506M-10B
36-C13 and 6-C19	UP8507M-06C	UP8507M-10C	UP8507M-06R	UP8507M-10R	UP8507M-06W	UP8507M-10W	UP8507M-06B	UP8507M-10B
24-C13 and 12-C19	UP8508M-06C	UP8508M-10C	UP8508M-06R	UP8508M-10R	UP8508M-06W	UP8508M-10W	UP8508M-06B	UP8508M-10B
18-C13 and 18-C19	UP8509M-06C	UP8509M-10C	UP8509M-06R	UP8509M-10R	UP8509M-06W	UP8509M-10W	UP8509M-06B	UP8509M-10B
30-C19	UP8521M-06C	UP8521M-10C	UP8521M-06R	UP8521M-10R	UP8521M-06W	UP8521M-10W	UP8521M-06B	UP8521M-10B

BASIC, 72", 50A 208/240V 3PH (14.4 kW), CS8365C, CORDLOK

36-C13	UP8501B-06C	UP8501B-10C	UP8501B-06R	UP8501B-10R	UP8501B-06W	UP8501B-10W	UP8501B-06B	UP8501B-10B
24-C13 and 6-C19	UP8502B-06C	UP8502B-10C	UP8502B-06R	UP8502B-10R	UP8502B-06W	UP8502B-10W	UP8502B-06B	UP8502B-10B
42-C13	UP8506B-06C	UP8506B-10C	UP8506B-06R	UP8506B-10R	UP8506B-06W	UP8506B-10W	UP8506B-06B	UP8506B-10B
36-C13 and 6-C19	UP8507B-06C	UP8507B-10C	UP8507B-06R	UP8507B-10R	UP8507B-06W	UP8507B-10W	UP8507B-06B	UP8507B-10B
24-C13 and 12-C19	UP8508B-06C	UP8508B-10C	UP8508B-06R	UP8508B-10R	UP8508B-06W	UP8508B-10W	UP8508B-06B	UP8508B-10B
18-C13 and 18-C19	UP8509B-06C	UP8509B-10C	UP8509B-06R	UP8509B-10R	UP8509B-06W	UP8509B-10W	UP8509B-06B	UP8509B-10B
30-C19	UP8521B-06C	UP8521B-10C	UP8521B-06R	UP8521B-10R	UP8521B-06W	UP8521B-10W	UP8521B-06B	UP8521B-10B

82" 50A
MONITORED, 82", 50A 208/240V 3PH (14.4 kW), CS8365C, CORDLOK

42-C13	UP8511M-06C	UP8511M-10C	UP8511M-06R	UP8511M-10R	UP8511M-06W	UP8511M-10W	UP8511M-06B	UP8511M-10B
36-C13 and 6-C19	UP8512M-06C	UP8512M-10C	UP8512M-06R	UP8512M-10R	UP8512M-06W	UP8512M-10W	UP8512M-06B	UP8512M-10B
54-C13	UP8516M-06C	UP8516M-10C	UP8516M-06R	UP8516M-10R	UP8516M-06W	UP8516M-10W	UP8516M-06B	UP8516M-10B
42-C13 and 6-C19	UP8517M-06C	UP8517M-10C	UP8517M-06R	UP8517M-10R	UP8517M-06W	UP8517M-10W	UP8517M-06B	UP8517M-10B
36-C19 and 12-C19	UP8518M-06C	UP8518M-10C	UP8518M-06R	UP8518M-10R	UP8518M-06W	UP8518M-10W	UP8518M-06B	UP8518M-10B

BASIC, 82", 50A 208/240V 3PH (14.4 kW), CS8365C, CORDLOK

42-C13	UP8511B-06C	UP8511B-10C	UP8511B-06R	UP8511B-10R	UP8511B-06W	UP8511B-10W	UP8511B-06B	UP8511B-10B
36-C13 and 6-C19	UP8512B-06C	UP8512B-10C	UP8512B-06R	UP8512B-10R	UP8512B-06W	UP8512B-10W	UP8512B-06B	UP8512B-10B
54-C13	UP8516B-06C	UP8516B-10C	UP8516B-06R	UP8516B-10R	UP8516B-06W	UP8516B-10W	UP8516B-06B	UP8516B-10B
42-C13 and 6-C19	UP8517B-06C	UP8517B-10C	UP8517B-06R	UP8517B-10R	UP8517B-06W	UP8517B-10W	UP8517B-06B	UP8517B-10B
36-C19 and 12-C19	UP8518B-06C	UP8518B-10C	UP8518B-06R	UP8518B-10R	UP8518B-06W	UP8518B-10W	UP8518B-06B	UP8518B-10B

Specifications, 8600 Series

Receptacle	Carbon 6' Whip	Carbon 10' Whip	Red 6' Whip	Red 10' Whip	White 6' Whip	White 10' Whip	Blue 6' Whip	Blue 10' Whip
------------	-------------------	--------------------	----------------	-----------------	------------------	-------------------	-----------------	------------------

72" 60A

MONITORED, 72", 60A 208/240V 3PH (17.2 kW), IEC 309 (IP44), CORDLOK

	Carbon 6' Whip	Carbon 10' Whip	Red 6' Whip	Red 10' Whip	White 6' Whip	White 10' Whip	Blue 6' Whip	Blue 10' Whip
36-C13	UP8601M-06C	UP8601M-10C	UP8601M-06R	UP8601M-10R	UP8601M-06W	UP8601M-10W	UP8601M-06B	UP8601M-10B
24-C13 and 6-C19	UP8602M-06C	UP8602M-10C	UP8602M-06R	UP8602M-10R	UP8602M-06W	UP8602M-10W	UP8602M-06B	UP8602M-10B
42-C13	UP8606M-06C	UP8606M-10C	UP8606M-06R	UP8606M-10R	UP8606M-06W	UP8606M-10W	UP8606M-06B	UP8606M-10B
36-C13 and 6-C19	UP8607M-06C	UP8607M-10C	UP8607M-06R	UP8607M-10R	UP8607M-06W	UP8607M-10W	UP8607M-06B	UP8607M-10B
24-C13 and 12-C19	UP8608M-06C	UP8608M-10C	UP8608M-06R	UP8608M-10R	UP8608M-06W	UP8608M-10W	UP8608M-06B	UP8608M-10B
18-C13 and 18-C19	UP8609M-06C	UP8609M-10C	UP8609M-06R	UP8609M-10R	UP8609M-06W	UP8609M-10W	UP8609M-06B	UP8609M-10B
30-C19	UP8621M-06C	UP8621M-10C	UP8621M-06R	UP8621M-10R	UP8621M-06W	UP8621M-10W	UP8621M-06B	UP8621M-10B

BASIC, 72", 60A 208/240V 3PH (17.2 kW), IEC 309 (IP44), CORDLOK

	Carbon 6' Whip	Carbon 10' Whip	Red 6' Whip	Red 10' Whip	White 6' Whip	White 10' Whip	Blue 6' Whip	Blue 10' Whip
36-C13	UP8601B-06C	UP8601B-10C	UP8601B-06R	UP8601B-10R	UP8601B-06W	UP8601B-10W	UP8601B-06B	UP8601B-10B
24-C13 and 6-C19	UP8602B-06C	UP8602B-10C	UP8602B-06R	UP8602B-10R	UP8602B-06W	UP8602B-10W	UP8602B-06B	UP8602B-10B
42-C13	UP8606B-06C	UP8606B-10C	UP8606B-06R	UP8606B-10R	UP8606B-06W	UP8606B-10W	UP8606B-06B	UP8606B-10B
36-C13 and 6-C19	UP8607B-06C	UP8607B-10C	UP8607B-06R	UP8607B-10R	UP8607B-06W	UP8607B-10W	UP8607B-06B	UP8607B-10B
24-C13 and 12-C19	UP8608B-06C	UP8608B-10C	UP8608B-06R	UP8608B-10R	UP8608B-06W	UP8608B-10W	UP8608B-06B	UP8608B-10B
18-C13 and 18-C19	UP8609B-06C	UP8609B-10C	UP8609B-06R	UP8609B-10R	UP8609B-06W	UP8609B-10W	UP8609B-06B	UP8609B-10B
30-C19	UP8621B-06C	UP8621B-10C	UP8621B-06R	UP8621B-10R	UP8621B-06W	UP8621B-10W	UP8621B-06B	UP8621B-10B

82" 60A

MONITORED, 82", 60A 208/240V 3PH (17.2 kW), IEC 309 (IP44), CORDLOK

	Carbon 6' Whip	Carbon 10' Whip	Red 6' Whip	Red 10' Whip	White 6' Whip	White 10' Whip	Blue 6' Whip	Blue 10' Whip
42-C13	UP8611M-06C	UP8611M-10C	UP8611M-06R	UP8611M-10R	UP8611M-06W	UP8611M-10W	UP8611M-06B	UP8611M-10B
36-C13 and 6-C19	UP8612M-06C	UP8612M-10C	UP8612M-06R	UP8612M-10R	UP8612M-06W	UP8612M-10W	UP8612M-06B	UP8612M-10B
54-C13	UP8616M-06C	UP8616M-10C	UP8616M-06R	UP8616M-10R	UP8616M-06W	UP8616M-10W	UP8616M-06B	UP8616M-10B
42-C13 and 6-C19	UP8617M-06C	UP8617M-10C	UP8617M-06R	UP8617M-10R	UP8617M-06W	UP8617M-10W	UP8617M-06B	UP8617M-10B
36-C19 and 12-C19	UP8618M-06C	UP8618M-10C	UP8618M-06R	UP8618M-10R	UP8618M-06W	UP8618M-10W	UP8618M-06B	UP8618M-10B

BASIC, 82", 60A 208/240V 3PH (17.2 kW), IEC 309 (IP44), CORDLOK

	Carbon 6' Whip	Carbon 10' Whip	Red 6' Whip	Red 10' Whip	White 6' Whip	White 10' Whip	Blue 6' Whip	Blue 10' Whip
42-C13	UP8611B-06C	UP8611B-10C	UP8611B-06R	UP8611B-10R	UP8611B-06W	UP8611B-10W	UP8611B-06B	UP8611B-10B
36-C13 and 6-C19	UP8612B-06C	UP8612B-10C	UP8612B-06R	UP8612B-10R	UP8612B-06W	UP8612B-10W	UP8612B-06B	UP8612B-10B
54-C13	UP8616B-06C	UP8616B-10C	UP8616B-06R	UP8616B-10R	UP8616B-06W	UP8616B-10W	UP8616B-06B	UP8616B-10B
42-C13 and 6-C19	UP8617B-06C	UP8617B-10C	UP8617B-06R	UP8617B-10R	UP8617B-06W	UP8617B-10W	UP8617B-06B	UP8617B-10B
36-C19 and 12-C19	UP8618B-06C	UP8618B-10C	UP8618B-06R	UP8618B-10R	UP8618B-06W	UP8618B-10W	UP8618B-06B	UP8618B-10B