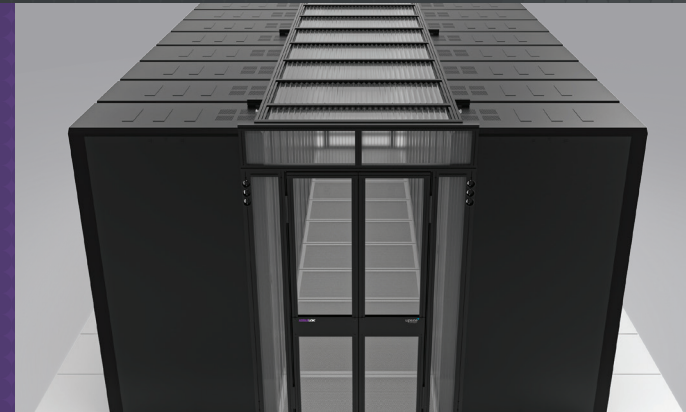


**AISLELOK<sup>®</sup>**

RIGID AND MODULAR  
CONTAINMENT



*Containment made easy.*

**upsite<sup>↑</sup>**  
technologies<sup>®</sup>

# AISLELOK®

## Table of Contents

### 1 AisleLok® Containment Overview

#### AisleLok® Rigid Containment

- 2 Rigid Containment Overview
- 3 Swing Doors
- 4 Double Sliding Doors
- 5 Single Sliding Doors
- 6 Drop Away Ceilings
- 7 Chimneys
- 8 Filler Panels
- 9 Modular Wall
- 10 Cooling Unit Extension

#### AisleLok® Modular Containment

- 11 Modular Containment Overview
- 12 Rack Top Angle Baffles
- 13 Rack Top Vertical Baffles
- 14 Bi-Directional Doors
- 15 Adjustable Rack Gap Panel

#### AisleLok® Accessories

- 16 Magnetic Under Rack Panel
- 17 Acrycell Tape
- 18 Adjustable Mounting Post

BK = Black, CL = Clear, WH = White



AisleLok Containment Solutions are comprised of our original award winning AisleLok Modular Containment and our AisleLok Rigid Containment products. In most cases, our products have been designed to be magnetically attached, toolless or single tool assembly making installation quicker and more cost effective. Between these two great offerings, Upsite has a containment solution for every data center operators airflow management goals and budget. Whether you are acquiring containment for a new build or improving the conditions of an existing site, we have a containment solution for you.

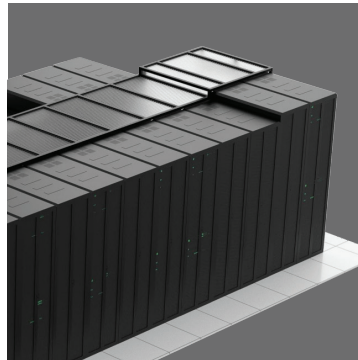
**Magnetic attachments offer several advantages for facility Installation:**

- **Self-installation eliminates the need for external labor.**
- **Easy to add, remove, or modify elements as needed.**
- **Avoid the damage and contamination caused by traditional mechanical methods, such as drilling or screwing.**

AisleLok® Rigid Containment  
Swing Doors



AisleLok® Rigid Containment  
Drop Away Ceilings



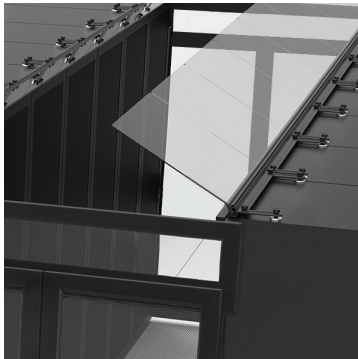
AisleLok® Rigid Containment  
Chimneys



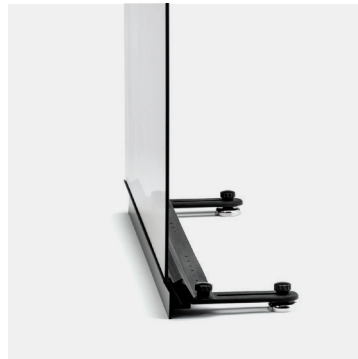
AisleLok® Modular Wall



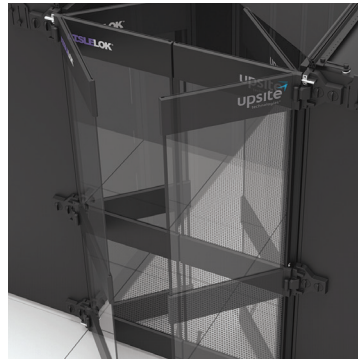
AisleLok® Rigid Containment  
Cooling Unit Extension



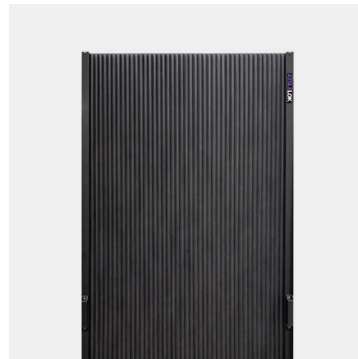
AisleLok® Modular Containment  
Rack Top Angle Baffle



AisleLok® Modular Containment  
Rack Top Vertical Baffle



AisleLok® Modular Containment  
Bi-Directional Doors



AisleLok® Modular Containment  
Adjustable Rack Gap Panel



Acrycell™ Sealing Tape

## AisleLok® Rigid Containment

AisleLok® Rigid Containment is the industry's most innovative containment solution designed to offer the highest level of airflow management benefits for either hot or cold aisle isolation, but with greater functionality and ease than traditional containment solutions. The AisleLok® Rigid Containment solutions include: Ceilings, Chimneys, Swing Doors, and Sliding Doors. Ceilings can be racktop, floor, or structural overhead grid supported.



## AisleLok® Rigid Containment Swing Doors

### Part Number

10263-04-BK	4', ~42U, Rigid Swing Door, 18" Door Panels & TW Sidelights, BK
10263-04-CL	4', ~42U, Rigid Swing Door, 18" Door Panels & TW Sidelights, CL
10263-05-BK	5', ~42U, Rigid Swing Door, 18" Door Panels & TW Sidelights, BK
10263-05-CL	5', ~42U, Rigid Swing Door, 18" Door Panels & TW Sidelights, CL
10263-06-BK	6', ~42U, Rigid Swing Door, 18" Door Panels & TW Sidelights, BK
10263-06-CL	6', ~42U, Rigid Swing Door, 18" Door Panels & TW Sidelights, CL
10263-07-BK	7', ~42U, Rigid Swing Door, 18" Door Panels & TW Sidelights, BK
10263-07-CL	7', ~42U, Rigid Swing Door, 18" Door Panels & TW Sidelights, CL
10263-08-BK	8', ~42U, Rigid Swing Door, 18" Door Panels & TW Sidelights, BK
10263-08-CL	8', ~42U, Rigid Swing Door, 18" Door Panels & TW Sidelights, CL

### Application

Designed to fit common cabinet dimensions and aisle widths. Standard and custom height transom windows are available for swing doors.

- Can be used for either the hot or cold aisle, or stand-alone equipment.
- Simple design allows doors to be easily assembled, installed, and reconfigured as your computer room evolves.
- Consists of matching LH and RH door panels with sidelights.
- Beneficial in both raised-floor and slab data center environments.
- Single panel Swing doors available upon request.

### Features

- Standard sizes fit common aisle widths and heights while custom widths and heights can be easily accommodated.
- Can be easily assembled directly out-of-the-box with a single hand tool; attaches directly to side of end-aisle cabinets using exclusive magnetic attachment with Magswitch® technology.
- Quick and easy mounting allows for minimal disruption to the data center.



- See-through doors provide maximum visibility in and out of the aisle; panels are available in clear polycarbonate twin-wall polycarbonate.
- Rugged, high quality design enhances professional aesthetics of the computer room.
- Also available without magnets for mechanical attachment

### Benefits

- Separates supply and return airflow paths.
- Supports the highest level of containment for maximum efficiency.
- Supports reduced energy costs by providing the opportunity to increase set point temperatures and/or turn off cooling units or reduce fan speeds.
- Supports increased reliability and availability of IT equipment by reducing server intake temperatures.
- Allows for higher rack densities.
- Prevents hot air recirculation.
- Flexible design allows the containment system to adapt as the computer room evolves.

## MAGNETICALLY ATTACHED — TOOLLESS

## AisleLok® Rigid Containment Double Sliding Doors

### Part Number

- 10155-450 4' Sliding Doors, BK 42-45U
- 10255-450 4' Sliding Doors, WH 42-45U
- 11155-650 6' Sliding Doors, BK 42-45U
- 11255-650 6' Sliding Doors, WH 42-45U
- 10155-750 7' Sliding Doors, BK 42-45U
- 10255-750 7' Sliding Doors, WH 42-45U
- 10155-850 8' Sliding Doors, BK 42-45U
- 10255-850 8' Sliding Doors, WH 42-45U

### Applications

Designed to fit common cabinet dimensions and aisle widths. Standard and custom height transom windows are available for swing doors.

- Can be used for either the hot or cold aisle, or stand-alone equipment.
- Simple installation and modular design allows doors to easily be removed, relocated, or repositioned as your computer room evolves.
- Consists of matching LH and RH door panels with gravity-assisted slide rails.
- Works best when the opposing rows of racks end evenly, but can also be used on uneven rows with the AisleLok® Adjustable Mounting Post (10169).
- Beneficial in both raised-floor and slab data center environments.

### Features

- Standardized off-the-shelf design, accommodates common rack heights. An optional Transom Window can be paired with the Sliding Doors to increase the effective height.
- No tools required for installation; attaches magnetically to side of end-aisle cabinets using exclusive Magswitch® technology.
- Quick and easy mounting allows for minimal disruption to the data center.



- Rugged, high quality design enhances professional aesthetics of the computer room.
- See-through doors provide maximum visibility in and out of the aisle.
- Includes a Stay Open Mechanism to hold doors open as needed.
- Standard in black or white, custom colors are available.
- Flame rated materials.

### Benefits

- Supports reduced energy costs by providing the opportunity to increase set point temperatures and/or turn off cooling units or reduce fan speeds.
- Supports increased reliability and availability of IT equipment by reducing server intake temperatures.
- Allows for higher rack densities.
- Prevents hot air recirculation.
- Flexible design allows the containment system to adapt as the computer room evolves.
- Tool-less installation with no drilling required. Optional mechanical installation is available.
- Lower initial cost than traditional containment.
- Modular design and out-of-the-box installation does not require 3rd party design, engineering, or construction, which minimizes computer room disruption.

# AisleLok® Rigid Containment Single Sliding Doors

## Part Number

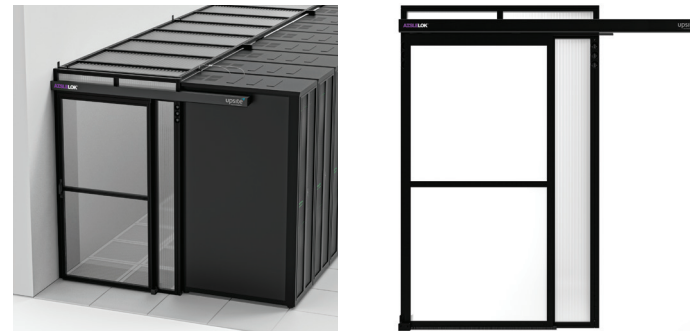
10264-04-RH-2MAG-BK 4', ~42-44U, Single Sliding Door, RH Open, BK  
10264-04-LH-2MAG-BK 4', ~42-44U, Single Sliding Door, LH Open, BK  
10264-04-RH-2MAG-CL 4', ~42-44U, Single Sliding Door, RH Open, CL  
10264-04-LH-2MAG-CL 4', ~42-44U, Single Sliding Door, LH Open, CL

## Applications

- AisleLok® Single Sliding Doors are available in left or right operation and can be used for either hot or cold aisles, or with stand-alone equipment.
- Innovative design allows doors to be easily installed, and reconfigured with a single provided tool.
- Left hand (LH) slides left to open, right hand (RH) slides right to open (as viewed from the outside).
- Beneficial in both raised-floor and slab data center environments.
- Can be used against a wall or other obstruction.

## Features

- The 4' Single Sliding Doors are designed for aisles with cabinet frame to cabinet frame widths up to 54" (1372mm) and cabinet frame to wall widths up to 56" (1432mm).
- Door Height = 80.1", fits 42U cabinets.
- AisleLok Magnetic Doors offer the quickest and easiest assembly in the industry.
- Attaches directly out-of-the-box to the side of aisle-end cabinets using Upsite's exclusive magnetic attachment technology featuring Magswitch®.
- Auto-closing mechanism closes the door smoothly.
- Stay open mechanism holds the door open as needed.
- Transparent polycarbonate door panels provide unobstructed visibility in and out of the aisle.



- Structural aluminum framing available in black or clear anodized finishes.
- Rugged, high quality design enhances the professional aesthetics of the computer room.
- No threshold design.
- Optional Transom Window can be placed above the Sliding Door to increase the effective height.
- Flame rated materials.
- Safety cable tethers included.

## Benefits

- Closing off aisles with doors creates an effective barrier between supply and return airflow paths, blocking bypass airflow and preventing hot air recirculation.
- Supports reduced energy costs by creating the opportunity to increase temperature set points and/or turn off cooling units.
- AisleLok Doors support increased reliability and availability of IT equipment by reducing server intake temperatures.
- Supports higher rack densities.
- Magnetically attached doors require only one tool (provided) for installation.
- Easy installation reduces the need to hire external labor.
- Magnetic attachment eliminates installation cutting and drilling operations in a live data center.
- Magnetic attachment design allows the containment system to easily be removed, relocated and reused as the computer room evolves.

## AisleLok® Rigid Containment Drop Away Ceilings

### Part Number

10260 Rigid Containment Ceilings

*All aisle lengths and widths can easily be contained. Contact an Upsite representative for more information.*

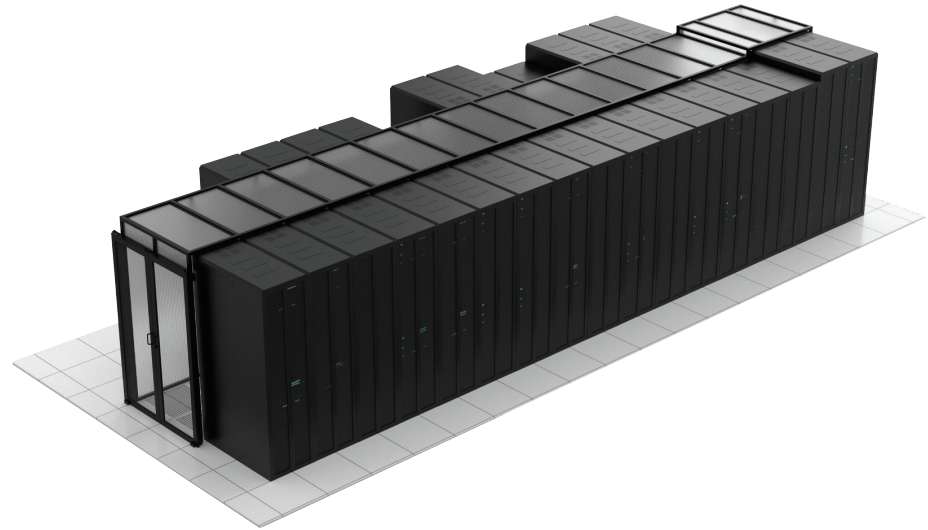
### Application

The AisleLok® Drop away ceilings are a key component of Upsite's Rigid Containment solution.

- Drop away ceilings are designed for cold aisle applications with raised floor supply. With in-row cooling, the Ceiling can be used on either hot aisles or cold aisles.
- Drop away ceilings can be used to contain the hot aisle where in-row coolers are deployed.
- Structural frame assemblies are installed with a single hand tool and can be magnetically mounted to cabinets (Racktop), allowing for a quick and easy installation with minimal disruption to the computer room.
- Drop away ceiling panels are easily set into and are magnetically attached to the structural frame.
- Ceilings can be racktop, floor, or structural overhead grid supported.

### Features

- Standard sizes fit common rack widths and aisle lengths while custom widths and lengths can be easily accommodated.
- Magnetic drop away panels allow for tool-less removal and replacement for easy overhead access.
- Can be easily installed directly out-of-the-box with a single hand tool.
- Frames are held in place with magnetic attachments, and backed up with cable tethers.



- Class A fire rated materials are approved for installation beneath sprinkler systems. Drop away panels are UL 94 V0 and ASTM E84 rated.
- Panels become soft and drop out of the frame before sprinklers activate.

### Benefits

- Separates supply and return airflow paths.
- Supports efficient data center operation with tool-less access through ceiling system.
- Supports the highest level of containment for maximum efficiency.
- Supports reduced energy costs by providing the opportunity to increase set point temperatures and/or turn off cooling units or reduce fan speeds.
- Supports increased reliability and availability of IT equipment by reducing server intake temperatures.
- Allows for higher rack densities.
- Prevents hot air recirculation.
- Flexible design allows the containment system to adapt as the computer room evolves.

# AisleLok® Rigid Containment Chimneys

## Part Number

10261 Rigid Containment Chimneys

*All aisle lengths and widths can easily be contained. Contact an Upsite representative for more information.*

## Application

The AisleLok® Chimney is a key component of Upsite's Rigid Containment solution.

- The Chimney is designed for hot aisle applications to fully duct exhaust air to ceiling plenum return or direct exhaust vertically in nonfully ducted applications.
- The Rack Top Chimney can also be used in cold aisle applications to capture supply air from overhead ducted supply.
- Chimneys can be racktop, floor, or structural overhead grid supported
- Structural frame assembles with a single hand tool and are magnetically mounted to cabinets (Racktop), allowing for a quick and easy installation with minimal disruption to the computer room.
- Panels are held in place by the structural frame and are available in a variety of materials and colors.

## Features

- Standard sizes fit common rack widths and aisle lengths while custom widths and lengths can be easily accommodated.
- Can be easily installed directly out-of-the-box with a single hand tool.
- Structural frame is magnetically attached to cabinets, and backed up with cable tethers.



- Structural frame can also be suspended from the building's structural ceiling.
- Panels are available in a variety of opaque aluminum composite material (ACM) and are standard in black or white with other colors available; clear solid or translucent twin-wall polycarbonate material is also available as a standard option. Fire Ratings vary by material type.

## Benefits

- Separates supply and return airflow paths.
- Supports the highest level of containment for maximum efficiency.
- Supports reduced energy costs by providing the opportunity to increase set point temperatures and/or turn off cooling units or reduce fan speeds.
- Supports increased reliability and availability of IT equipment by reducing server intake temperatures.
- Allows for higher rack densities.
- Prevents hot air recirculation.
- Flexible design allows the containment system to adapt as the computer room evolves.

## AisleLok® Rigid Containment Filler Panels

### Part Number

10271 Rigid Containment Filler Panels

*Designed to fit common width and height dimensions. Custom widths and heights can be purchased (Please call us at 888.982.7800 for availability).*

### Application

AisleLok® Filler Panels are removable or fixed aluminum framed wall structures that provide separation between data center hot aisles and cold aisles.

AisleLok® Filler Panels are an ideal solution for containing airflow when rows are not fully populated with cabinets, or gaps are caused by columns or other obstructions.

AisleLok® Filler Panels are available in custom heights and widths and the aluminum support framing is available in a clear or black anodized finish. Filler Panels offer easy one-tool installation and removal.

### Features

- AisleLok® Filler Panels are lightweight aluminum framed wall structures that allows for quick installation, removal and reinstallation.
- The Filler Panels provide a durable, yet attractive solution to data center row interruptions and gaps and are suitable for long term use.
- Filler Panels connect to Rigid Containment Ceilings and Chimneys with internal CamLok connectors that allow them to be installed or removed in minutes using just one tool. (Tool included with each order).
- Filler Panels are available in custom sizes to accommodate any specific requirements.
- Available in Fire Rated Class A, ASTM E-84, and V0.



### Benefits

- Ease of installation reduces the need for external labor.
- Modular design allows for reuse, addition and reconfiguration in an ever changing environment.
- Improves airflow management by creating separation between hot aisles, cold aisles, and other areas of the data center.
- Supports reduced energy costs and increased cooling capacity by providing the opportunity to increase set point temperatures and/or turn off cooling units or reduce fan speed.

## AisleLok® Rigid Containment Modular Wall

### Twin Wall Part Number

10269-0496-TW-BK	Modular Wall, 4'W X 8'H, Twin Wall, BK
10269-0496-TW-CL	Modular Wall, 4'W X 8'H, Twin Wall, CL
10269-0896-TW-BK	Modular Wall, 8'W X 8'H, Twin Wall, BK
10269-0896-TW-CL	Modular Wall, 8'W X 8'H, Twin Wall, CL
10269-1296-TW-BK	Modular Wall, 12'W X 8'H, Twin Wall, BK
10269-1296-TW-CL	Modular Wall, 12'W X 8'H, Twin Wall, CL
10269-1696-TW-BK	Modular Wall, 16'W X 8'H, Twin Wall, BK
10269-1696-TW-CL	Modular Wall, 16'W X 8'H, Twin Wall, CL
10269-2096-TW-BK	Modular Wall, 20'W X 8'H, Twin Wall, BK
10269-2096-TW-CL	Modular Wall, 20'W X 8'H, Twin Wall, CL

### ACM Part Number

10269-0496-ACMWH-BK	Modular Wall, 4'W X 8'H, WH ACM, BK EXT
10269-0496-ACMWH-CL	Modular Wall, 4'W X 8'H, WH ACM, CL EXT
10269-0496-ACMBK-BK	Modular Wall, 4'W X 8'H, BK ACM, BK EXT
10269-0496-ACMBK-CL	Modular Wall, 4'W X 8'H, BK ACM, CL EXT

*Custom lengths, heights, and colors available*

### Application

The AisleLok® Modular Wall is a free-standing aluminum framed modular wall structure available with either clear twin wall polycarbonate or solid aluminum composite material (ACM) panels. The AisleLok® Modular Wall provides an ideal solution for creating separation between hot aisles, cold aisles, and other areas of a data center to help contain and manage airflow. The AisleLok® Modular Wall comes in five standard lengths of 4', 8', 12', 16', and 20' with a standard height of 8'. The aluminum support framing is available in a choice of clear or black anodized finish. Total installation time varies by size, but is typically 15–20 minutes for a 12' section.



The AisleLok® Modular Wall can also be ordered in customized lengths and/or heights. Customization options include securing to the ceiling, floor and existing walls with L-brackets, or can be attached to cabinets or other metallic surfaces using magnetic attachment kits. (Call us at 888.982.7800 for custom requirements).

### Features

- The AisleLok® Modular Wall is an easy to install movable lightweight aluminum framed wall structure that allows for quick installation, removal and reinstallation, but is also durable and attractive enough for long term use.
- Requires minimal tools to assemble and install in minutes (tools are included with each order).
- Additional panels can be added to make the structure wider or taller for new applications.
- Available in flame-rated materials (Fire Rated Class A and ASTM E-84) clear twin wall polycarbonate or white or black ACM.

### Benefits

- Ease of installation reduces the need for expert installers.
- Flexible design allows for reuse, addition and reconfiguration in an ever changing environment.
- Improves airflow management by creating separation between hot aisles, cold aisles, and other areas of the data center.
- Supports reduced energy costs and increased cooling capacity by providing the opportunity to increase set point temperatures and/or turn off cooling units or reduce fan speed.

## AisleLok® Rigid Containment Cooling Unit Extensions

### Part Number

10262 Rigid Containment CRAC Extensions

*Designed to fit common CRAC/CRAH dimensions. Custom configurations can be easily accommodated. Contact us for a quote.*

### Application

The AisleLok® Cooling Unit Extension is a key component of Upsite's Rigid Containment solution.

- The Cooling Unit Extension is designed for downflow CRACs and CRAHs; custom options available for other cooling unit flow configurations.
- Fully ducts cooling units to drop ceiling for ceiling plenum return or pulls air from higher up in the room in non-fully ducted applications.
- Structural frame assembles with a single hand tool and are magnetically mounted to cabinets, allowing for a quick and easy installation with minimal disruption to the computer room.
- Panels are held in place by the structural frame and are available in a variety of materials and colors.

### Features

- Standard sizes fit common CRAC/CRAH widths and lengths while custom widths and lengths can be easily accommodated.
- Can be easily installed directly out-of-the-box with a single hand tool.
- Front panels easily slide open to allow access for filter replacement.
- Frames are held in place with magnetic attachments, and backed up with cable tethers.



- Panels are available in a variety of opaque aluminum composite material (ACM) and are standard in black or white with other colors available.
- ACM panels have a fire rating of ASTM E84.

### Benefits

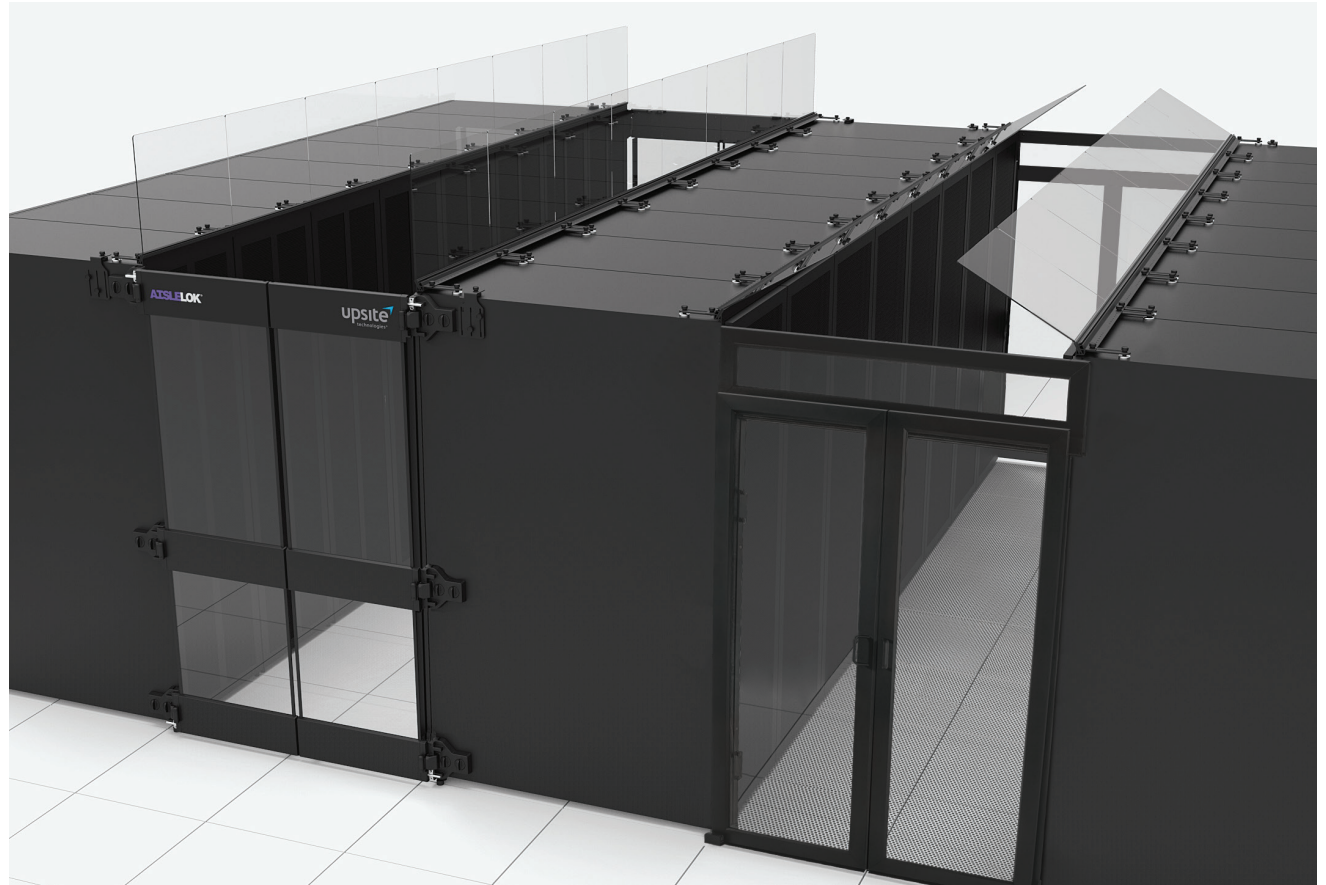
- Separates supply and return airflow paths.
- Supports reducing bypass airflow.
- Supports the highest level of containment for maximum efficiency.
- Supports reduced energy costs by providing the opportunity to increase set point temperatures and/or turn off cooling units or reduce fan speeds.
- Flexible design allows the containment system to adapt as the computer room evolves.

## AisleLok® Modular Containment

Hot and cold aisle containment have become proven methods to improve computer room cooling efficiency, increase rack densities, and improve overall utilization of the data center. Prior to Upsite's introduction of AisleLok® Modular Containment, the data center industry has only had two containment options to accomplish these goals: hard wall containment, and soft curtain containment.

Upsite's solution, AisleLok® Modular Containment, provides an exciting alternative to the status quo by offering a much simpler and cost-effective containment solution that is easier to implement than any containment solution ever created.

AisleLok® Modular Containment offers the same core airflow management benefits of traditional containment solutions, but with the major advantage of saving time and money upfront. The key benefit AisleLok® Modular Containment offers is rapid deployment with little or no disruption to existing operations, and the ability to reconfigure the installation as the needs of the computer room change. And with no 3rd party required for design or installation, most operators self-install.



## AisleLok® Modular Containment Rack Top Angle Baffle

### Part Number

10160-24	24" (600mm)	Rack Top Angle Baffle
10160-27.5	27.5" (700mm)	Rack Top Angle Baffle
10160-30	30" (750mm)	Rack Top Angle Baffle
10160-31.5	31.5" (800mm)	Rack Top Angle Baffle

*Custom heights and widths available*

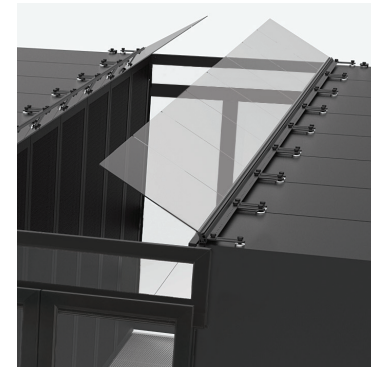
### Application

The AisleLok® Rack Top Angle Baffles (30° from horizontal) provide much of the benefit of full containment at a lower cost with magnetic attachment.

- The Angle Baffles are designed for cold aisle application.
- Quick and easy magnetic mounting allows for a fully deployed containment solution in minutes, with minimal disruption to the computer room.
- Simple installation and modular design allows AisleLok® Modular Containment components to easily be removed, relocated, repositioned, and reused as your data center needs change.

### Features

- Fits common rack widths, allowing for easy, off-the-shelf ordering.
- Can be installed magnetically out-of-the-box without any tools.
- Attaches directly to top of the rack magnetically.
- Clear material construction provides maximum light transmissibility.
- Adjustable magnetic mounting tails can be positioned to fit the top of most cabinets.
- Baffles can be reconfigured as needed.
- Does not interfere with most overhead cabling configurations.
- UL94 flammability rated materials.



### Benefits

- Supports reduced energy costs by providing the opportunity to increase set point temperatures and/or turn off cooling units or reduce fan speeds.
- Supports increased reliability and availability of IT equipment by reducing server intake temperatures.
- Allows for higher rack densities.
- Prevents hot air recirculation.
- Flexible design allows the containment system to adapt as the computer room evolves.
- Lower initial cost than traditional containment.
- Modular design and out-of-the-box installation does not require 3rd party design, engineering, or construction, which minimizes computer room disruption.

## AisleLok® Modular Containment Rack Top Vertical Baffle

### Part Number

10161-24	24" (600mm)	Rack Top Vertical Baffle
10161-27.5	27.5" (700mm)	Rack Top Vertical Baffle
10161-30	30" (750mm)	Rack Top Vertical Baffle
10161-31.5	31.5" (800mm)	Rack Top Vertical Baffle

*Custom heights and widths available*

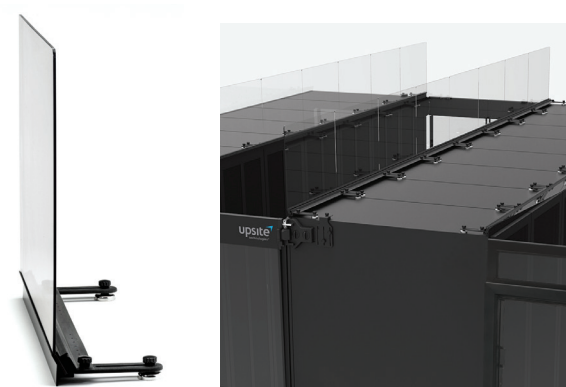
### Application

The AisleLok® Rack Top Vertical Baffles (90° from horizontal) provide much of the benefit of full containment at a lower cost with magnetic attachment.

- The Vertical Baffles are designed for hot aisle application.
- Quick and easy magnetic mounting allows for a fully deployed containment solution in minutes, with minimal disruption to the computer room.
- Simple installation and modular design allows AisleLok® Modular Containment components to easily be removed, relocated, repositioned, and reused as your data center needs change.

### Features

- Fits common rack widths, allowing for easy, off-the-shelf ordering.
- Can be installed magnetically out-of-the-box without any tools.
- Attaches directly to top of the rack magnetically.
- Clear material construction provides maximum light transmissibility.
- Adjustable magnetic mounting tails can be positioned to fit the top of most cabinets.
- Baffles can be reconfigured as needed.
- Does not interfere with most overhead cabling configurations.
- UL94 flammability rated materials.



### Benefits

- Supports reduced energy costs by providing the opportunity to increase set point temperatures and/or turn off cooling units or reduce fan speeds.
- Supports increased reliability and availability of IT equipment by reducing server intake temperatures.
- Allows for higher rack densities.
- Prevents hot air recirculation.
- Flexible design allows the containment system to adapt as the computer room evolves.
- Lower initial cost than traditional containment.
- Modular design and out-of-the-box installation does not require 3rd party design, engineering, or construction, which minimizes computer room disruption.

## MAGNETICALLY ATTACHED — TOOLLESS

## AisleLok® Modular Containment Bi-Directional Doors

### Part Number

10163-42	48" (1200 mm) X 42U Bi-Directional Doors
10163-45	48" (1200 mm) X 45U Bi-Directional Doors
10163-48	48" (1200 mm) X 48U Bi-Directional Doors
10163-50	48" (1200 mm) X 50U Bi-Directional Doors

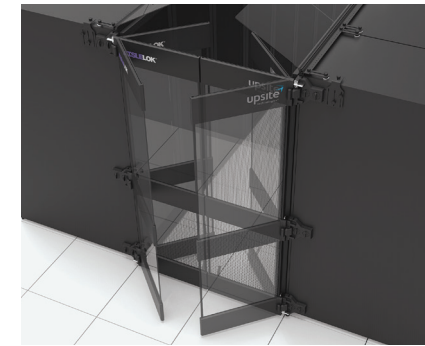
### Applications

The AisleLok® Modular Containment Bi-Directional Doors are designed to fit common cabinet dimensions and 4' aisle widths.

- Can be used for either the hot or cold aisle, or stand-alone equipment.
- Simple installation and modular design allows doors to easily be removed, relocated, or repositioned as your computer room evolves.
- Consists of matching LH and RH door panels with bi-directional swinging hinges.
- Works best when the opposing rows of racks end evenly, but also can provide significant benefit when used on uneven or individual rows.
- Beneficial in both raised-floor and slab data center environments.
- Can be used in pairs or individual panels can be placed at the end of a stand-alone row.

### Features

- Standardized off-the-shelf design, available in common rack heights.
- No tools required for installation; attaches magnetically to side of the end-aisle cabinet using twist-locking magnets.
- Quick and easy mounting allows for minimal disruption to the data center.
- Rugged, high quality design enhances professional aesthetics of the computer room.



- See-through doors provide maximum visibility in and out of the aisle.
- Hands-free operation allows equipment carts to be pushed directly through the doors without the need to first slide or swing open the doors by hand.
- Includes attached door stops to hold doors open as needed.
- UL94 flame rated materials.

### Benefits

- Supports reduced energy costs by providing the opportunity to increase set point temperatures and/or turn off cooling units or reduce fan speeds.
- Supports increased reliability and availability of IT equipment by reducing server intake temperatures.
- Allows for higher rack densities.
- Prevents hot air recirculation.
- Flexible design allows the containment system to adapt as the computer room evolves.
- Lower initial cost than traditional containment.
- Modular design and out-of-the-box installation does not require 3rd party design, engineering, or construction, which minimizes computer room disruption.

## AisleLok® Modular Containment Adjustable Rack Gap Panel

### Part Number

10245-SM	Small Adjustable Rack Gap Panel, 24" 42-45U
10245-LG	Large Adjustable Rack Gap Panel, 24" 48-50U
10345-SM	Small Adjustable Rack Gap Panel, 60" 42-45U
10345-LG	Large Adjustable Rack Gap Panel, 60" 48-50U
10164-SPK	Striker Plate Kit Accessory (Sold separately)

### Applications

The AisleLok® Adjustable Rack Gap Panel is an ideal solution for closing off gaps between racks, such as gaps created by building support columns or missing IT racks.

- The Adjustable Rack Gap Panel features a tool-less design and easily attaches directly to the rack side panel magnetically.
- With the case mounted, the user simply extends the retractable material across the gap, effectively closing off the opening when the handle attaches magnetically to the adjacent cabinet side panel or striker plate kit for non-metallic surfaces.
- The AisleLok® Adjustable Rack Gap Panel can enclose gap widths of 2.75" to 24" (10245) or 3.25" to 60" (10345).
- The Adjustable Rack Gap Panel is available to match popular rack heights.
- Total installation time is typically less than a minute when installing product between two cabinets.
- Adjustable Rack Gap Panel Striker Plate Kit (10164-SPK) can be attached to non-metallic surfaces to allow for installation of the Adjustable Rack Gap Panel in areas where an adjacent cabinet is not present.

### Features

- Covers gap widths of 2.75" to 24" (10245) or 3.25" to 60" (10345).
- Easy to order; no measuring or customization required.
- Installs out of the box. No assembly or configuration required for cabinet to cabinet use.
- Tool-less installation allows attachment directly to the cabinet side panel magnetically.
- Rugged, high quality design.
- Symmetrical design allows for mounting on left or right side.
- Can easily be removed and reapplied in minutes as your computer room needs change.
- ASTM E84 flame-rated materials.
- Adjustable Rack Gap Panel Striker Plate Kit allows for installation on non-metallic surfaces.



### Benefits

- Reduces exhaust air recirculation.
- Supports reduced energy costs by providing the opportunity to increase set point temperatures and/or turn off cooling units or reduce fan speeds.
- Enables the reduction of bypass airflow.
- Improves cooling airflow, which allows for higher rack densities.
- Supports increased reliability and availability of IT equipment by reducing server intake temperatures.
- Modular design and out-of-the-box installation does not require 3rd party design, engineering, or construction, which minimizes computer room disruption.

## MAGNETICALLY ATTACHED — TOOLLESS

## AisleLok® Magnetic Under Rack Panel

### Part Number

10226	26"	(660 mm)	Magnetic Under Rack Panel
10227	33.5"	(851 mm)	Magnetic Under Rack Panel
10228	96"	(2438 mm)	Magnetic Under Rack Panel

The AisleLok® Magnetic Under Rack Panel is a quick and easy way to improve airflow management and may immediately improve IT equipment intake air temperature. Its revolutionary sealing technology was re-designed to allow easy modifications for an improved seal on even large and unique openings found under many of today's racks. It complements and enhances the performance of existing blanking panels by either blocking bypass airflow or exhaust air recirculation to support cooling system efficiencies of the data center.

Easily and quickly remove excess material for a custom height using the prescored lines on the back of the Under Rack Panel—without tools. The panel attaches magnetically for easy application and relocation. The AisleLok Magnetic Under Rack Panel comes in three sizes: 26" (660mm) for rack width surfaces up to 24"W (610mm), 33.5" (851mm) for rack width surfaces up to 31.5"W (800mm), and 96" (2438mm) for rack width surfaces up to 94"W (2388mm).

The new AisleLok Magnetic Under Rack Panel will improve airflow management and help you recover stranded capacity. These panels are a cost effective way of reducing IT equipment hot spots, cooling unit inefficiencies, and infrastructure costs. Sealing the space under racks with the Magnetic Under Rack Panel is an essential aspect of airflow management best practices.



### Features

- Available in three widths; 26" (660mm), 33.5" (851mm), and 96" (2438mm).
- Prescored at 1-inch increments.
- Magnetic application.
- Rigid PVC material with UL94 V0.
- Economical solution.

### Benefits

- Easily install, remove, and relocate with magnetic application.
- Toolless installation and height adjustment reduces overall install time.
- Effective seal blocks bypass airflow and or exhaust recirculation and resulting hotspots.
- Improves IT equipment reliability and extends equipment life.
- Supports cooling unit fan speed reduction.
- Supports higher supply air temperatures and free cooling utilization.

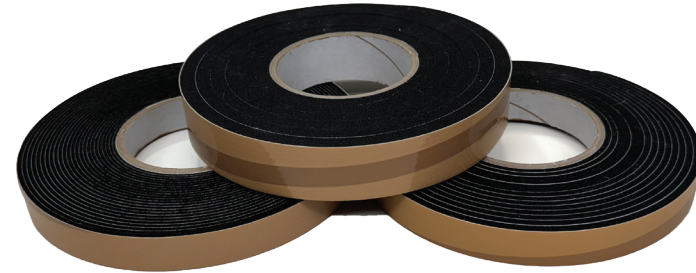
## AisleLok® Acrycell Tape

### Part Number

10108-001 Acrycell Sealing Tape, .5" H x .71" W x 26.25' L, BK, 3 rolls

10108-002 Acrycell Sealing Tape, 1" H x .71" W x 14.1' L, BK, 3 rolls

10108-003 Acrycell Sealing Tape, 2" H x 1.18" W x 8.5' L, BK, 5 rolls



### Application

The AisleLok® Acrycell Sealing Tape is the premium choice for sealing unusual gaps and openings in the data center including:

- Room perimeter.
- Floor openings.
- Under cabinets.
- Between racks.
- Around CRAC units.

Its revolutionary sealing technology greatly reduces costly bypass airflow, increasing usable cooling unit capacity, and ensuring maximized efficiency from HVAC equipment.

### Features

- Non-particulating tape is safe for the data center and ensures a durable secure seal.
- AisleLok® products are compliant with directive 2002/95/EC of the European Parliament and the Council on the Restriction of the Use of Certain Hazardous Substances in Electrical and Electric Equipment (RoHS).
- Time release expansion allows product installation without disturbing cables; tape will fully expand within 72 hours or longer depending on ambient temperature.
- Conforms to non-uniform spaces when completely expanded.
- Compact size for easy portability.

### Benefits

- Supports increasing cabinet density.
- Increases existing cooling unit capacity.
- Reduces the need to purchase additional cooling units.
- Improves IT equipment reliability and extends equipment life.

### Unique Acrycell Technology

Confirmed by a 3rd party laboratory's accelerated aging test this non-particulating sealing tape is truly "Data Center Safe" and also offers:

- Time release expansion that ensures a tight seal around cables and other impediments.
- Moldable physical quality that forms a tight seal on uneven surfaces and gaps.
- Customizable tape unrolls creating one continuous and uniform top-to-bottom seal.
- "Peel and Stick" installation saves labor, time and money.
- Compressed tape eliminates pinching, stuffing, or otherwise manipulating to install.

## AisleLok® Adjustable Mounting Post, 42-45U

### Part Number

10169 Adjustable Mounting Post, 42-45U, BK

### Application

The AisleLok® Adjustable Mounting Post is designed and intended to be used at the end of an uneven row of cabinets to support the attachment of AisleLok® Bi-Directional Doors and/or AisleLok® Adjustable Rack Gap Panels. This product is the ideal solution for creating a vertical support structure for attachment purposes in areas where a cabinet or rack cannot be installed, and aides in closing off openings at the ends of uneven aisles.

- Used as a vertical support structure.
- Accommodate the Bi-Directional Doors and Adjustable Rack Gap Panel.
- Can be adjusted to two different height positions (42U or 45U).
- Attaches directly to the raised floor.

### Features

- Adjustable heights (42U or 45U).
- Spring pin allows for easy and tool-less adjustment for desired height.
- Large bottom plate provides a strong structural support.
- Easy to assemble, installs in minutes.

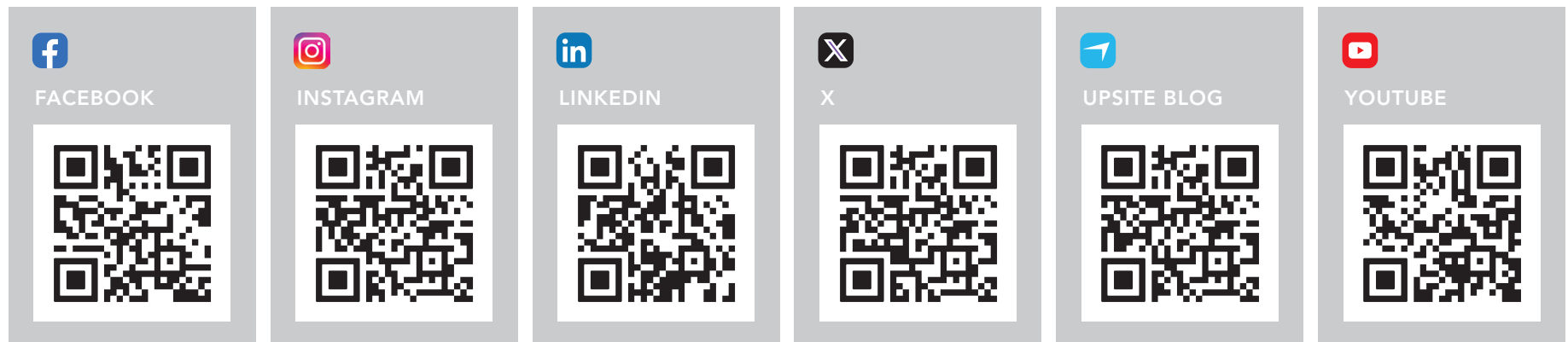
### Benefits

- Provides a structural support surface for the AisleLok® Bi-Directional Doors or AisleLok® Adjustable Rack Gap Panels in various types of applications.
- Will accommodate multiple cabinet heights (42U or 45U).
- Ships in two pieces to reduce shipping costs.
- All mounting hardware is included.
- Replacement hinge bracket (for Bi-Directional Doors) available for retrofits.



# FIND US ONLINE

*Stay connected with Upsite Technologies on social media*





**KOLDLOK®**

Raised Floor Airflow Management

**HOTLOK®**

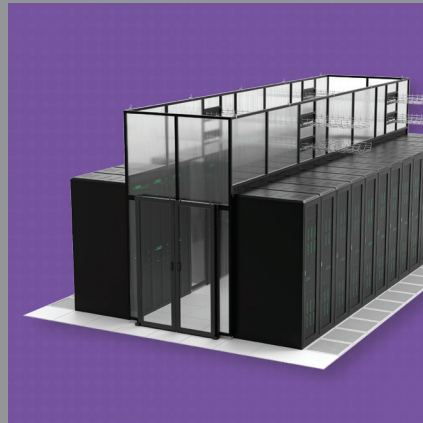
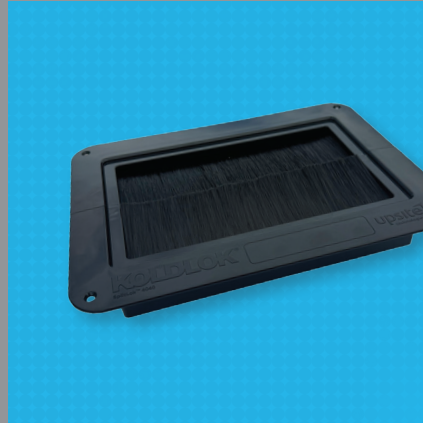
Rack Airflow Management

**AISLELOK®**

Aisle Airflow Management

**POWERLOK®**

Rack Power Distribution







+1.888.982.7800 505.798.0200 [info@upsite.com](mailto:info@upsite.com) [upsite.com](http://upsite.com)