



## Upsite Product Catalog

*Optimizing Data Center Cooling*

**KOLDLOK®**

**HOTLOK®**

**ATSLELOK®**

**POWERLOK®**

- 1** **KOLDLOK**<sup>®</sup>  
Raised Floor Airflow Management
- 3** **HOTLOK**<sup>®</sup>  
Rack Airflow Management
- 6** **AISLELOK**<sup>®</sup>  
Aisle Airflow Management
- 11** **POWERLOK**<sup>®</sup>  
Rack Power Distribution

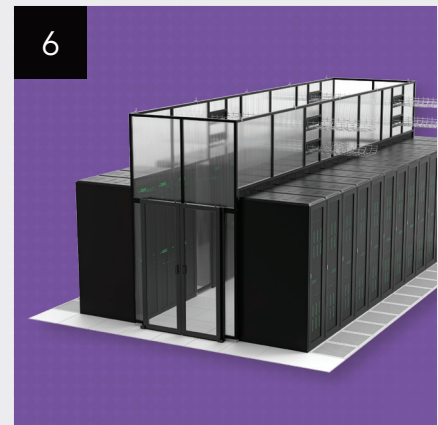
*For additional information, including product data sheets and install guides, please visit our website at [upsite.com](http://upsite.com).*



Toll Free: 888.982.7800  
Direct: 505.798.0200  
Email: [sales@upsite.com](mailto:sales@upsite.com)



**HotLok<sup>®</sup> Blanking Panels**  
See page 3



**AisleLok<sup>®</sup> Rigid Containment**  
See page 6



**PowerLok<sup>®</sup> Rack Power Distribution Units**  
See page 11

# KOLDLOK®

## Raised Floor Airflow Management

KoldLok® products are the industry standard for raised floor airflow management and are specifically designed to limit bypass airflow through raised floor openings.



Product	
<b>KoldLok® Integral</b> Part No. 1010	
<b>KoldLok® Split Integral</b> Part No. 3030	
<b>KoldLok® SplitLok™ Integral</b> Part No. 4040	
<b>KoldLok® SplitLok™ Square</b> Part No. 5050	
<b>KoldLok® 1010/4040 Cover</b> Part No. 10187	
<b>KoldLok® 5050 Cover</b> Part No. 10191	
<b>KoldLok® Mini</b> Part No. 10077	
<b>KoldLok® Surface Mount Original</b> Part No. 2020	
<b>KoldLok® Surface Mount Large</b> Part No. 2030	
<b>KoldLok® Surface Mount XLarge</b> Part No. 2040	

Product	
<b>KoldLok® 3" x 24" Extended</b> with 76 mm (3") Brush Filament Part No. 10012	
<b>KoldLok® 6" x 24" Extended</b> with 152 mm (6") Brush Filament Part No. 10013	
<b>KoldLok® 3" x 60" Extended</b> with 76 mm (3") Brush Filament Part No. 10097	
<b>KoldLok® 6" x 60" Extended</b> with 152 mm (6") Brush Filament Part No. 10098	
<b>KoldLok® 4" Round</b> Part No. 40001	
<b>KoldLok® 6" Round</b> Part No. 40003	
<b>2 Post Rack Grommet</b> Part No. 10123	

# HOTLOK®

## Rack Airflow Management

HotLok® products are an award-winning line of rack airflow management solutions, specifically designed to control intake airflow in server racks.



### Product

#### 1U 19" Blanking Panel

Part No. 10031 BK  
Part No. 10114 WH



#### 1U 19" Blanking Panel with Temperature Strip

Part No. 10035



#### 1U 23" Blanking Panel

Item No. 10177 BK



### Product

#### 2U Blanking Panel

Part No. 10033 BK  
Part No. 10115 WH



#### 2U Blanking Panel with Temperature Strip

Part No. 10038



### Product

#### 1U 19" Blanking Panel

Item No. 10221 BK (1,104 EA)  
Item No. 10222 WH (1,104 EA)



#### 2U 19" Blanking Panel

Item No. 10224 BK (528 EA)  
Item No. 10225 WH (528 EA)



### Product

#### 1U Pass Through Blanking Panel

Part No. 10112



#### 2U Pass Through Blanking Panel

Part No. 10113



#### Upsite® Temperature Strip

Part No. 10009



#### Upsite® Magnetic Temperature Strip

Part No. 10125



## Product

### Full Rack Blanking Panel Kit

**42-50U**

Part No. 10236, BK

*Provides up to 50U of sealing with multiple U configurations. Kit contains 1U and 2U blanking panels and 21U kitted blanking panels (19U blanking sheets attached to 1U blanking panels).*



### Full Rack Blanking Panel Kit

**42-50U**

Part No. 10246, WT

*Provides up to 50U of sealing with multiple U configurations. Kit contains 1U and 2U blanking panels and 21U kitted blanking panels (19U blanking sheets attached to 1U blanking panels).*

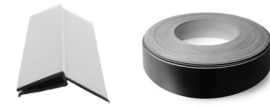


### Side Rail Sealing Kit, ~50U

45° Extrusions: 42" (4), 10" (2)

2.5" Sealing Membrane: 47" (4)

Part No. 10237

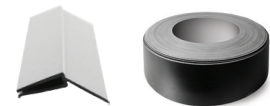


### Side Rail Sealing Kit, ~50U

45° Extrusions: 42" (4), 10" (2)

4" Sealing Membrane: 47" (4)

Part No. 10238

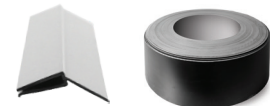


### Side Rail Sealing Kit, ~50U

45° Extrusions: 42" (4), 10" (2)

5.5" Sealing Membrane: 47" (4)

Part No. 10239



### Side Rail Sealing Kit, ~50U

90° Extrusions: 42" (4), 10" (2)

2.5" Sealing Membrane: 47" (4)

Part No. 10240

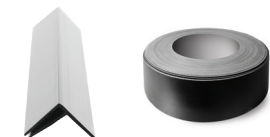


### Side Rail Sealing Kit, ~50U

90° Extrusions: 42" (4), 10" (2)

4" Sealing Membrane: 47" (4)

Part No. 10241

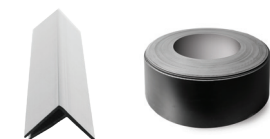


### Side Rail Sealing Kit, ~50U

90° Extrusions: 42" (4), 10" (2)

5.5" Sealing Membrane: 47" (4)

Part No. 10242



**Product**

**Round 4" Rack Mount Grommet**

Part No. 40002-10



**Product**

**SwitchFix 1U**

Part No. SF001-PRO



**SwitchFix 1U**

Part No. SF001-PR1



**SwitchFix 1U**

Part No. SF001-PR2



**SwitchFix 1U**

Part No. SF001-PR3



**SwitchFix 1U**

Part No. SF001-PR4



**SwitchFix 1U**

Part No. SF001-PR5



**SwitchFix 2U**

Part No. SF002-PR1



**SwitchFix 2U**

Part No. SF002-PR2



**SwitchFix 2U**

Part No. SF002-PR3



**SwitchFix 2U**

Part No. SF002-PR4



**SwitchFix 1U**

Part No. SF001-PD1



**SwitchFix 1U**

Part No. SF001-PS1



# ATSLELOK®

## Aisle Airflow Management

Our aisle containment solutions and portfolio of aisle airflow management products are designed to improve cooling effectiveness and efficiency by enhancing airflow management.



**All Rigid Containment solutions can be designed to fit any computer room configuration, including varying cabinet heights, single standing aisles, and many other unique layouts. Call for quote.**

### Rigid Containment Solution

#### 4' Swing Doors (1-LH and RH Set)

Part No. 10263-04-BK, 80.1" (2034mm) X ~42U, BK

Part No. 10263-04-CL, 80.1" (2034mm) X ~42U, CL

#### 5' Swing Doors (1-LH and RH Set)

Part No. 10263-05-BK, 80.1" (2034mm) X ~42U, BK

Part No. 10263-05-CL, 80.1" (2034mm) X ~42U, CL

#### 6' Swing Doors (1-LH and RH Set)

Part No. 10263-06-BK, 80.1" (2034mm) X ~42U, BK

Part No. 10263-06-CL, 80.1" (2034mm) X ~42U, CL

#### 7' Swing Doors (1-LH and RH Set)

Part No. 10263-07-BK, 80.1" (2034mm) X ~42U, BK

Part No. 10263-07-CL, 80.1" (2034mm) X ~42U, CL

#### 8' Swing Doors (1-LH and RH Set)

Part No. 10263-08-BK, 80.1" (2034mm) X ~42U, BK

Part No. 10263-08-CL, 80.1" (2034mm) X ~42U, CL

Magnetic attachment, UL94H-B

Other fire ratings available. Call for quote.



#### 4' Sliding Doors (1-LH and RH Set)

Part No. 10155-450 61.25" (1529mm) x 42-45U, BK

Part No. 10255-450 61.25" (1529mm) x 42-45U, WH

#### 6' Sliding Doors (1-LH and RH Set)

Part No. 11155-650, 85.25" (2165mm) x 42-45U, BK

Part No. 11255-650, 85.25" (2165mm) x 42-45U, WH

#### 7' Sliding Doors (1-LH and RH Set)

Part No. 10155-750, 93.25" (2369mm) x 42-45U, BK

Part No. 10255-750, 93.25" (2369mm) x 42-45U, WH

#### 8' Sliding Doors (1-LH and RH Set)

Part No. 10155-850, 106.25" (2699mm) x 42-45U, BK

Part No. 10255-850, 106.25" (2699mm) x 42-45U, WH

Magnetic attachment, UL94H-B

Other fire ratings available. Call for quote.



## Rigid Containment Solution

### Single Sliding Doors

Part No. 10264-04-RH-2MAG-BK, 4', ~42-44U, RH Open, BK

Part No. 10264-04-LH-2MAG-BK, 4', ~42-44U, LH Open, BK

Part No. 10264-04-RH-2MAG-CL, 4', ~42-44U, RH Open, CL

Part No. 10264-04-LH-2MAG-CL, 4', ~42-44U, LH Open, CL

*Magnetic attachment*



### 4' Transom Window

Part No. 20155-450 61.25" x ~50U, BK

Part No. 20255-450 61.25" x ~50U, WH

### 6' Transom Window

Part No. 20155-650 85.25" x ~50U, BK

Part No. 20255-650 85.25" x ~50U, WH

### 7' Transom Window

Part No. 20155-750 93.25" x ~50U, BK

Part No. 20255-750 93.25" x ~50U, WH

### 8' Transom Window

Part No. 20155-850 106.25" x ~50U, BK

Part No. 20255-850 106.25" x ~50U, WH

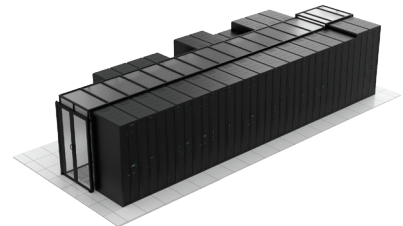
*For use with Sliding Doors and adds 8.75" (222 mm) to door height. UL94H-B Other fire ratings available. Call for quote.*



### Drop Away Ceilings

Part No. 10260

*Designed to fit common cabinet dimensions and aisle widths. All aisle lengths can be easily accommodated. Contact us for a quote.*



## Rigid Containment Solution

### Chimneys

Part No. 10261

*Designed to fit common cabinet dimensions and aisle widths. All aisle lengths can be easily accommodated. Contact us for a quote.*



### Filler Panels

Part No. 10271

*Designed to fit common width and height dimensions. Custom widths and heights can be purchased (Please call us at 888.982.7800 for availability).*



### 4' Modular Wall

Part No. 10269-0496-TW-BK 4'W X 8'H, Twin Wall, BK

Part No. 10269-0496-TW-CL 4'W X 8'H, Twin Wall, CL

### 8' Modular Wall

Part No. 10269-0896-TW-BK 8'W X 8'H, Twin Wall, BK

Part No. 10269-0896-TW-CL 8'W X 8'H, Twin Wall, CL

### 12' Modular Wall

Part No. 10269-1296-TW-BK 12'W X 8'H, Twin Wall, BK

Part No. 10269-1296-TW-CL 12'W X 8'H, Twin Wall, CL

### 16' Modular Wall

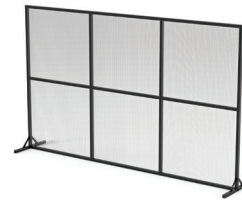
Part No. 10269-1696-TW-BK 16'W X 8'H, Twin Wall, BK

Part No. 10269-1696-TW-CL 16'W X 8'H, Twin Wall, CL

### 20' Modular Wall

Part No. 10269-2096-TW-BK 20'W X 8'H, Twin Wall, BK

Part No. 10269-2096-TW-CL 20'W X 8'H, Twin Wall, CL



### Cooling Unit Extension

Part No. 10262

*Designed to fit common CRAC/CRAH dimensions. Custom configurations can be easily accommodated. Contact us for a quote.*



## Modular Containment Solution

### Rack Top Angle Baffle

Part No. 10160-24	24" (600 mm)
Part No. 10160-27.5	27.5" (700 mm)
Part No. 10160-30	30" (750 mm)
Part No. 10160-31.5	31.5" (800 mm)



### Rack Top Vertical Baffle

Part No. 10161-24	24" (600 mm)
Part No. 10161-27.5	27.5" (700 mm)
Part No. 10161-30	30" (750 mm)
Part No. 10161-31.5	31.5" (800 mm)



## Modular Containment Solution

### Bi-Directional Doors (1-LH and RH Set)

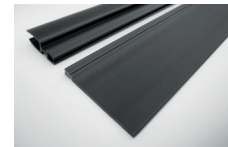
Part No. 10163-42	48" (1200 mm) x 42U
Part No. 10163-45	48" (1200 mm) x 45U
Part No. 10163-48	48" (1200 mm) x 48U
Part No. 10163-50	48" (1200 mm) x 50U



## Bi-Directional Doors Accessories

### Bi-Directional Doors Gap Seal Kit

Part No. 10163-421	42U, 1" to 1.75" (25.4 mm to 44.45 mm)
Part No. 10163-422	42U, 1.75" to 3.5" (44.45mm to 88.9mm)
Part No. 10163-423	42U, 3.5" to 4.5" (88.9mm to 114.3mm)
Part No. 10163-424	42U, 4.5" to 6.5" (114.3mm to 165.1mm)
Part No. 10163-425	42U, 6.5" to 8.5" (165.1mm to 215.9mm)
Part No. 10163-451	45U, 1" to 1.75" (25.4 mm to 44.45 mm)
Part No. 10163-452	45U, 1.75" to 3.5" (44.45mm to 88.9mm)
Part No. 10163-453	45U, 3.5" to 4.5" (88.9mm to 114.3mm)
Part No. 10163-454	45U, 4.5" to 6.5" (114.3mm to 165.1mm)
Part No. 10163-455	45U, 6.5" to 8.5" (165.1mm to 215.9mm)
Part No. 10163-481	48U, 1" to 1.75" (25.4 mm to 44.45 mm)
Part No. 10163-482	48U, 1.75" to 3.5" (44.45mm to 88.9mm)
Part No. 10163-483	48U, 3.5" to 4.5" (88.9mm to 114.3mm)
Part No. 10163-484	48U, 4.5" to 6.5" (114.3mm to 165.1mm)
Part No. 10163-485	48U, 6.5" to 8.5" (165.1mm to 215.9mm)
Part No. 10163-501	50U, 1" to 1.75" (25.4 mm to 44.45 mm)
Part No. 10163-502	50U, 1.75" to 3.5" (44.45mm to 88.9mm)
Part No. 10163-503	50U, 3.5" to 4.5" (88.9mm to 114.3mm)
Part No. 10163-504	50U, 4.5" to 6.5" (114.3mm to 165.1mm)
Part No. 10163-505	50U, 6.5" to 8.5" (165.1mm to 215.9mm)



## Modular Containment Solution

### Adjustable Rack Gap Panel, Cellular Material

Part No. 10245-SM 24" X 42-45U

Part No. 10245-LG 24" X 48-50U

Part No. 10345-SM 60" X 42-45U

Part No. 10345-LG 60" X 48-50U



### Adjustable Rack Gap Panel Striker Plate Kit

Part No. 10164-SPK



## Aisle Sealing Products

### Magnetic Under Rack Panel 26"

Part No. 10226

*Magnetic attachment*



### Magnetic Under Rack Panel 33.5"

Part No. 10227

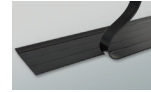
*Magnetic attachment*



### Magnetic Under Rack Panel 96"

Part No. 10228

*Magnetic attachment*



## Aisle Sealing Products

### Acrycell™ Sealing Tape .5"

Part No. 10108-001



### Acrycell™ Sealing Tape 1"

Part No. 10108-002



### Acrycell™ Sealing Tape 2"

Part No. 10108-003



### Adjustable Mounting Post

Part No. 10169



# POWERLOK®

## Rack Power Distribution

PowerLok® products are the new standard for rack PDUs that are specifically designed to offer greater reliability and advanced functionality for mission critical facilities.



**Color options:** All models are available in carbon, red, blue, and white (not shown) colors. Minimum order quantities and lead times may vary depending on model type.



**Cord locking options:** All models come standard with our universal cord locking solution, CordLock, featuring industry leading receptacle density for securing C13 and C19 cords. All models are also available without CordLock, if preferred.



**Switching options:** Switching capability can be added at any time to Switched Ready™ models with our scalable switching technology, SwitchLok.

### Switched Ready, Monitored, and Basic Power Distribution Units (PDUs)

#### 8200–8300 Rack PDUs

208/240V, 120/208V, Up to 8.6 kW

Part No. Multiple



#### 8400–8600 Rack PDUs

208/240V, Up to 17 kW

Part No. Multiple



#### 8700–8800 Rack PDUs

240/415V, Up to 34 kW

Part No. Multiple



### Fast-Response Power Distribution Units (PDUs)

#### UP4101 Rack PDUs

2U, 30A 120V 1Ph (2.9 Kw), 20-520R, Nema L5-30P, Carbon

Part No. UP4101B-06C Basic, 6' Whip

Part No. UP4101B-10C Basic, 10' Whip

Part No. UP4101M-06C Monitored, 6' Whip

Part No. UP4101M-10C Monitored, 10' Whip

Part No. UP4101S-06C Switched Ready, 6' Whip

Part No. UP4101S-10C Switched Ready, 10' Whip



## Fast-Response Power Distribution Units (PDUs)

### UP4202 Rack PDUs

72", 30A 208V 1Ph (5.0 Kw), 12-C13 & 4-C19, Nema L6-30P, Carbon

- Part No. UP4202B-06C Basic, 6' Whip
- Part No. UP4202B-10C Basic, 10' Whip
- Part No. UP4202M-06C Monitored, 6' Whip
- Part No. UP4202M-10C Monitored, 10' Whip
- Part No. UP4202S-06C Switched Ready, 6' Whip
- Part No. UP4202S-10C Switched Ready, 10' Whip



### UP4221 Rack PDUs

2U, 20A 208V 1Ph (3.3 Kw), 18-C13, Nema L6-20P, Carbon

- Part No. UP4221B-06C Basic, 6' Whip
- Part No. UP4221B-10C Basic, 10' Whip
- Part No. UP4221M-06C Monitored, 6'
- Part No. UP4221M-10C Monitored, 10' Whip
- Part No. UP4221S-06C Switched Ready, 6' Whip
- Part No. UP4221S-10C Switched Ready, 10' Whip



### UP8114 Rack PDUs

41", 20A 120V 1Ph (1.9 Kw), 24-520R, Nema L5-20P, Carbon

- Part No. UP8114B-06C Basic, 6' Whip
- Part No. UP8114B-10C Basic, 10' Whip
- Part No. UP8114M-06C Monitored, 6'
- Part No. UP8114M-10C Monitored, 10' Whip
- Part No. UP8114S-06C Switched Ready, 6' Whip
- Part No. UP8114S-10C Switched Ready, 10' Whip



### UP8116 Rack PDUs

41", 30A 120V 1Ph (2.9 Kw), 22-520R, Nema L5-30P, Carbon

- Part No. UP8116B-06C Basic, 6' Whip
- Part No. UP8116B-10C Basic, 10' Whip
- Part No. UP8116M-06C Monitored, 6'
- Part No. UP8116M-10C Monitored, 10' Whip
- Part No. UP8116S-06C Switched Ready, 6' Whip
- Part No. UP8116S-10C Switched Ready, 10' Whip



### UP8204 Rack PDUs

72", 30A 208V 1PH (5.0 kW), NEMA L6-30P, CordLok, Carbon, 36-C13 and 6-C19

- Part No. UP8204B-06C Basic, 6' Whip
- Part No. UP8204B-10C Basic, 10' Whip
- Part No. UP8204M-06C Monitored, 6' Whip
- Part No. UP8204D-10C Monitored, 10' Whip
- Part No. UP8204S-06C Switched Ready, 6' Whip
- Part No. UP8204S-10C Switched Ready, 10' Whip



## Fast-Response Power Distribution Units (PDUs)

### UP8233 Rack PDUs

72", 20A 208V 1PH (3.3 kW), NEMA L6-20P, CordLok, Carbon, 32-C13 and 4-C19

Part No. UP8233B-06C	Basic, 6' Whip
Part No. UP8233B-10C	Basic, 10' Whip
Part No. UP8233M-06C	Monitored, 6' Whip
Part No. UP8233M-10C	Monitored, 10' Whip
Part No. UP8233S-06C	Switched Ready, 6' Whip
Part No. UP8233S-10C	Switched Ready, 10' Whip



### UP8303 Rack PDUs

72", 30A 120/208V 3PH (8.6 kW), NEMA L21-30P, CordLok, Carbon, 36-C13 and 6-C19, (2) 5-15R

Part No. UP8303B-06C	Basic, 6' Whip
Part No. UP8303B-10C	Basic, 10' Whip
Part No. UP8303M-06C	Monitored, 6' Whip
Part No. UP8303M-10C	Monitored, 10' Whip
Part No. UP8303S-06C	Switched Ready, 6' Whip
Part No. UP8303S-10C	Switched Ready, 10' Whip



### UP8403 Rack PDUs

72", 30A 208/240V 3PH (10.0 kW), NEMA L15-30P, CordLok, Carbon, 36-C13 and 6-C19

Part No. UP8403B-06C	Basic, 6' Whip
Part No. UP8403B-10C	Basic, 10' Whip
Part No. UP8403M-06C	Monitored, 6' Whip
Part No. UP8403M-10C	Monitored, 10' Whip
Part No. UP8403S-06C	Switched Ready, 6' Whip
Part No. UP8403S-10C	Switched Ready, 10' Whip



### UP8433 Rack PDUs

72", 35A 208/240V 3PH (11.2 kW), CS8365C, CordLok, Carbon, 36-C13 and 6-C19

Part No. UP8433B-06C	Basic, 6' Whip
Part No. UP8433B-10C	Basic, 10' Whip
Part No. UP8433M-06C	Monitored, 6' Whip
Part No. UP8433M-10C	Monitored, 10' Whip
Part No. UP8433S-06C	Switched Ready, 6' Whip
Part No. UP8433S-10C	Switched Ready, 10' Whip



### UP8507 Rack PDUs

72", 50A 208/240V 3PH (14.4 kW), CS8365C, CordLok, Carbon, 36-C13 and 6-C19

Part No. UP8507B-06C	Basic, 6' Whip
Part No. UP8507B-10C	Basic, 10' Whip
Part No. UP8507M-06C	Monitored, 6' Whip
Part No. UP8507M-10C	Monitored, 10' Whip
Part No. UP8507S-06C	Switched Ready, 6' Whip
Part No. UP8507S-10C	Switched Ready, 10' Whip



## Fast-Response Power Distribution Units (PDUs)

### UP8508 Rack PDUs

72", 50A 208/240V 3PH (14.4 kW), CS8365C, CordLok, Carbon, 24-C13 and 12-C19

- Part No. UP8508B-06C Basic, 6' Whip
- Part No. UP8508B-10C Basic, 10' Whip
- Part No. UP8508M-06C Monitored, 6' Whip
- Part No. UP8508M-10C Monitored, 10' Whip
- Part No. UP8508S-06C Switched Ready, 6' Whip
- Part No. UP8508S-10C Switched Ready, 10' Whip



### UP8509 Rack PDUs

72", 50A 208/240V 3PH (14.4 kW), CS8365C, CordLok, Carbon, 18-C13 and 18-C19

- Part No. UP8509B-06C Basic, 6' Whip
- Part No. UP8509B-10C Basic, 10' Whip
- Part No. UP8509M-06C Monitored, 6' Whip
- Part No. UP8509M-10C Monitored, 10' Whip
- Part No. UP8509S-06C Switched Ready, 6' Whip
- Part No. UP8509S-10C Switched Ready, 10' Whip



### UP8607 Rack PDUs

72", 60A 208/240V 3PH (17.2 kW), IEC309 (IP44), CordLok, Carbon, 36-C13 and 6-C19

- Part No. UP8607B-06C Basic, 6' Whip
- Part No. UP8607B-10C Basic, 10' Whip
- Part No. UP8607M-06C Monitored, 6' Whip
- Part No. UP8607M-10C Monitored, 10' Whip
- Part No. UP8607S-06C Switched Ready, 6' Whip
- Part No. UP8607S-10C Switched Ready, 10' Whip



### UP8608 Rack PDUs

72", 60A 208/240V 3PH (17.2 kW), IEC309 (IP44), CordLok, Carbon, 24-C13 and 12-C19

- Part No. UP8608B-06C Basic, 6' Whip
- Part No. UP8608B-10C Basic, 10' Whip
- Part No. UP8608M-06C Monitored, 6' Whip
- Part No. UP8608M-10C Monitored, 10' Whip
- Part No. UP8608S-06C Switched Ready, 6' Whip
- Part No. UP8608S-10C Switched Ready, 10' Whip



### Fast-Response Power Distribution Units (PDUs)

#### UP8609 Rack PDUs

72", 60A 208/240V 3PH (17.2 kW), IEC309 (IP44), CordLok, Carbon, 18-C13 and 18-C19

Part No. UP8609B-06C	Basic, 6' Whip
Part No. UP8609B-06XC	Basic, 6' Whip, No Plug
Part No. UP8609B-10C	Basic, 10' Whip
Part No. UP8609B-10XC	Basic, 10' Whip, No Plug
Part No. UP8609M-06C	Monitored, 6' Whip
Part No. UP8609M-06XC	Monitored, 6' Whip, No Plug
Part No. UP8609M-10C	Monitored, 10' Whip
Part No. UP8609M-10XC	Monitored, 10' Whip, No Plug
Part No. UP8609S-06C	Switched Ready, 6' Whip
Part No. UP8609S-06XC	Switched Ready, 6' Whip, No Plug
Part No. UP8609S-10C	Switched Ready, 10' Whip
Part No. UP8609S-10XC	Switched Ready, 10' Whip, No Plug



#### UP8703 Rack PDUs

72", 20A 240/415V 3PH (11.5 kW), IEC309 (IP44), CordLok, Carbon, 36-C13 and 12-C19

Part No. UP8703B-06C	Basic, 6' Whip
Part No. UP8703B-10C	Basic, 10' Whip
Part No. UP8703M-06C	Monitored, 6' Whip
Part No. UP8703M-10C	Monitored, 10' Whip
Part No. UP8703S-06C	Switched Ready, 6' Whip
Part No. UP8703S-10C	Switched Ready, 10' Whip



#### UP8733 Rack PDUs

72", 30A 240/415V 3PH (17.2 kW), IEC309 (IP44), CordLok, Carbon, 30-C13 and 12-C19

Part No. UP8733B-06C	Basic, 6' Whip
Part No. UP8733B-10C	Basic, 10' Whip
Part No. UP8733M-06C	Monitored, 6' Whip
Part No. UP8733M-10C	Monitored, 10' Whip
Part No. UP8733S-06C	Switched Ready, 6' Whip
Part No. UP8733S-10C	Switched Ready, 10' Whip



#### UP8804 Rack PDUs

72", 60A 240/415V 3PH (34.5 kW), IEC309 (IP67), CordLok, Carbon, 27-C19

Part No. UP8804B-06C	Basic, 6' Whip
Part No. UP8804B-10C	Basic, 10' Whip
Part No. UP8804V-06C	Input Monitored, Switched Ready, 6' Whip
Part No. UP8804V-10C	Input Monitored, Switched Ready, 10' Whip



## Fast-Response Power Distribution Units (PDUs)

### UP9003 Rack PDUs

78", 100A 208/240V 3PH (28.8 kW), IEC309 (IP67), Phase Color CordLok, Carbon, 6-C13 and 18-C19, TAA Compliant

- Part No. UP9003B-06C Basic, 6' Whip
- Part No. UP9003B-06XC Basic, 6' Whip, No Plug
- Part No. UP9003B-10C Basic, 10' Whip
- Part No. UP9003B-10XC Basic, 10' Whip, No Plug
- Part No. UP9003V-06C Input Monitored, Switched Ready, 6' Whip
- Part No. UP9003V-06XC Input Monitored, Switched Ready, 6' Whip, No Plug
- Part No. UP9003V-10C Input Monitored, Switched Ready, 10' Whip
- Part No. UP9003V-10XC Input Monitored, Switched Ready, 10' Whip, No Plug



### UP9063 Rack PDUs

88", 125A 208/240V 3PH (36.0 kW), CordLok, Carbon, 6-C13 and 24-C19, TAA Compliant

- Part No. UP9063B-06XC Basic, 6' Whip, No Plug
- Part No. UP9063B-10XC Basic, 10' Whip, No Plug
- Part No. UP9063V-06XC Input Monitored, Switched Ready, 6' Whip, No Plug
- Part No. UP9063V-10XC Input Monitored, Switched Ready, 10' Whip, No Plug



### UP9102 Rack PDUs

78", 100A 240/415V 3PH (57.5 kW), IEC 309 (IP67), Phase Color CordLok, Carbon, 6-C13 and 15-C19, TAA Compliant

- Part No. UP9102B-06C Basic, 6' Whip
- Part No. UP9102B-06XC Basic, 6' Whip, No Plug
- Part No. UP9102B-10C Basic, 10' Whip
- Part No. UP9102B-10XC Basic, 10' Whip, No Plug
- Part No. UP9102V-06C Input Monitored, Switched Ready, 6' Whip
- Part No. UP9102V-06XC Input Monitored, Switched Ready, 6' Whip, No Plug
- Part No. UP9102V-10C Input Monitored, Switched Ready, 10' Whip
- Part No. UP9102V-10XC Input Monitored, Switched Ready, 10' Whip, No Plug



### UP9162 Rack PDUs

88", 125A 240/415V 3PH (71.9 kW), CordLok, Carbon, 6-C13 and 18-C19, TAA Compliant

- Part No. UP9162B-06XC Basic, 6' Whip, No Plug
- Part No. UP9162B-10XC Basic, 10' Whip, No Plug
- Part No. UP9162V-06XC Input Monitored, Switched Ready, 6' Whip, No Plug
- Part No. UP9162V-10XC Input Monitored, Switched Ready, 10' Whip, No Plug



### Modular Base Box

Part No. MBB-208-10-N	Modular Base Box, 10' Whip No PIM, 208V
Part No. MBB-208-12-N	Modular Base Box, 12' Whip, No PIM, 208V
Part No. MBB-208-14-N	Modular Base Box, 14' Whip, No PIM, 208V
Part No. MBB-208-16-N	Modular Base Box, 16' Whip, No PIM, 208V
Part No. MBB-208-18-N	Modular Base Box, 18' Whip, No PIM, 208V
Part No. MBB-208-20-N	Modular Base Box, 20' Whip, No PIM, 208V
Part No. MBB-208-22-N	Modular Base Box, 22' Whip, No PIM, 208V
Part No. MBB-208-24-N	Modular Base Box, 24' Whip, No PIM, 208V
Part No. MBB-208-26-N	Modular Base Box, 26' Whip, No PIM, 208V
Part No. MBB-208-28-N	Modular Base Box, 28' Whip, No PIM, 208V
Part No. MBB-208-30-N	Modular Base Box, 30' Whip, No PIM, 208V
Part No. MBB-208-32-N	Modular Base Box, 32' Whip, No PIM, 208V
Part No. MBB-208-34-N	Modular Base Box, 34' Whip, No PIM, 208V
Part No. MBB-208-36-N	Modular Base Box, 36' Whip, No PIM, 208V
Part No. MBB-208-38-N	Modular Base Box, 38' Whip, No PIM, 208V
Part No. MBB-208-40-N	Modular Base Box, 40' Whip, No PIM, 208V
Part No. MBB-208-42-N	Modular Base Box, 42' Whip, No PIM, 208V
Part No. MBB-208-44-N	Modular Base Box, 44' Whip, No PIM, 208V
Part No. MBB-208-46-N	Modular Base Box, 46' Whip, No PIM, 208V
Part No. MBB-208-48-N	Modular Base Box, 48' Whip, No PIM, 208V
Part No. MBB-208-50-N	Modular Base Box, 50' Whip, No PIM, 208V
Part No. MBB-208-52-N	Modular Base Box, 52' Whip, No PIM, 208V
Part No. MBB-208-54-N	Modular Base Box, 54' Whip, No PIM, 208V
Part No. MBB-208-56-N	Modular Base Box, 56' Whip, No PIM, 208V
Part No. MBB-208-58-N	Modular Base Box, 58' Whip, No PIM, 208V
Part No. MBB-208-60-N	Modular Base Box, 60' Whip, No PIM, 208V
Part No. MBB-208-62-N	Modular Base Box, 62' Whip, No PIM, 208V
Part No. MBB-208-64-N	Modular Base Box, 64' Whip, No PIM, 208V
Part No. MBB-208-66-N	Modular Base Box, 66' Whip, No PIM, 208V
Part No. MBB-208-68-N	Modular Base Box, 68' Whip, No PIM, 208V
Part No. MBB-400-10	Modular Base Box, 10' Whip, No PIM, 415V
Part No. MBB-400-12	Modular Base Box, 12' Whip, No PIM, 415V
Part No. MBB-400-14	Modular Base Box, 14' Whip, No PIM, 415V
Part No. MBB-400-16	Modular Base Box, 16' Whip, No PIM, 415V
Part No. MBB-400-18	Modular Base Box, 18' Whip, No PIM, 415V
Part No. MBB-400-20	Modular Base Box, 20' Whip, No PIM, 415V
Part No. MBB-400-22	Modular Base Box, 22' Whip, No PIM, 415V
Part No. MBB-400-24	Modular Base Box, 24' Whip, No PIM, 415V
Part No. MBB-400-26	Modular Base Box, 26' Whip, No PIM, 415V
Part No. MBB-400-28	Modular Base Box, 28' Whip, No PIM, 415V
Part No. MBB-400-30	Modular Base Box, 30' Whip, No PIM, 415V
Part No. MBB-400-32	Modular Base Box, 32' Whip, No PIM, 415V
Part No. MBB-400-34	Modular Base Box, 34' Whip, No PIM, 415V
Part No. MBB-400-36	Modular Base Box, 36' Whip, No PIM, 415V
Part No. MBB-400-38	Modular Base Box, 38' Whip, No PIM, 415V
Part No. MBB-400-40	Modular Base Box, 40' Whip, No PIM, 415V
Part No. MBB-400-60	Modular Base Box, 60' Whip, No PIM, 415V
Part No. MBB-400-42	Modular Base Box, 42' Whip, No PIM, 415V
Part No. MBB-400-62	Modular Base Box, 62' Whip, No PIM, 415V

### Modular Base Box

Part No. MBB-400-44	Modular Base Box, 44' Whip, No PIM, 415V
Part No. MBB-400-64	Modular Base Box, 64' Whip, No PIM, 415V
Part No. MBB-400-46	Modular Base Box, 46' Whip, No PIM, 415V
Part No. MBB-400-66	Modular Base Box, 66' Whip, No PIM, 415V
Part No. MBB-400-48	Modular Base Box, 48' Whip, No PIM, 415V
Part No. MBB-400-68	Modular Base Box, 68' Whip, No PIM, 415V
Part No. MBB-400-50	Modular Base Box, 50' Whip, No PIM, 415V
Part No. MBB-400-52	Modular Base Box, 52' Whip, No PIM, 415V
Part No. MBB-400-54	Modular Base Box, 54' Whip, No PIM, 415V
Part No. MBB-400-56	Modular Base Box, 56' Whip, No PIM, 415V
Part No. MBB-400-58	Modular Base Box, 58' Whip, No PIM, 415V

### Power Interface Module

Part No. PIM-330R6-1	Power Interface Module, 330R6W , 240V/415V
Part No. PIM-460R9-1	Power Interface Module, 460R9W, 120V/208V
Part No. PIM-560R9-1	Power Interface Module, 560R6W, 240V/415V
Part No. PIM-520R6-1	Power Interface Module, 520R6W, 240V/415V
Part No. PIM-530R6-1	Power Interface Module, 530R6W, 240V/415V
Part No. PIM-BLANK-A	Power Interface Module, Blank
Part No. PIM-C8369-1	Power Interface Module, CS8369C, 120V/208V
Part No. PIM-L1530-1	Power Interface Module, L15-30R, 120V/208V
Part No. PIM-L2120-1	Power Interface Module, L21-20R, 120V/208V
Part No. PIM-L2130-1	Power Interface Module, L21-30R, 120V/208V
Part No. PIM-L5200-2	Power Interface Module, 2-L5-20R, 120V/208V
Part No. PIM-L5300-2	Power Interface Module, 2-L5-30R, 120V/208V
Part No. PIM-L6200-2	Power Interface Module, 2-L6-20R, 120V/208V
Part No. PIM-L6300-2	Power Interface Module, 2-L6-30R, 120V/208V

### EnviroLok

#### Daisy Chain Temperature and Humidity Sensor

Part No. UP1001	(1) Pod A, (1) 6' RJ12 Cord
Part No. UP2001	(2) Pod A-B, (2) 6' RJ12 Cords
Part No. UP3001	(3) Pod A-C, (3) 6' RJ12 Cords
Part No. UP4001	(4) Pod A-D, (4) 6' RJ12 Cords
Part No. UPC01	(1) Pod C, (1) 6' RJ12 Cord
Part No. UPD01	(1) Pod D, (1) 6' RJ12 Cord

#### RJ12 Cord

Part No. UPP06	6'
Part No. UPP09	9'

### SwitchLok

#### Outlet Switching and Metering Cord

Part No. UP1300SM	C13-C14, 5'
Part No. UP1900SM	C19-C20, 5'
Part No. UP5200SM	5-20P - 5-20R, 5'





Toll Free: 888.982.7800

Direct: 505.798.0200

Email: [sales@upsite.com](mailto:sales@upsite.com)